



# xkcd geohashing

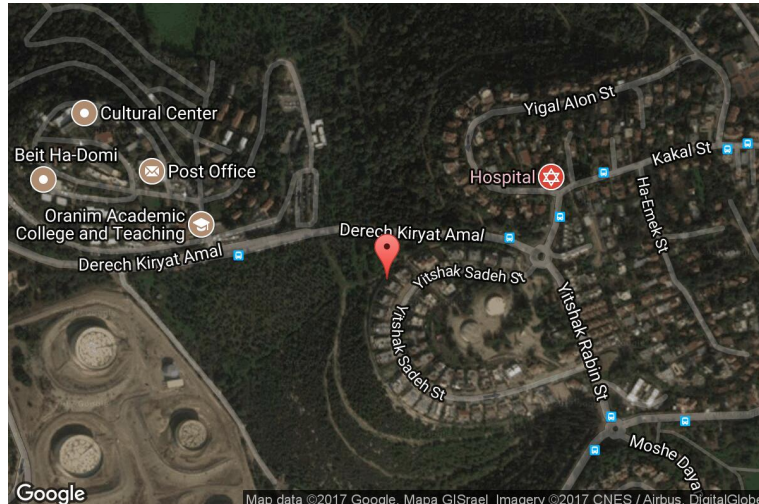
*The internet was here!*

## Geohash for 32, 35 on 2008-05-28

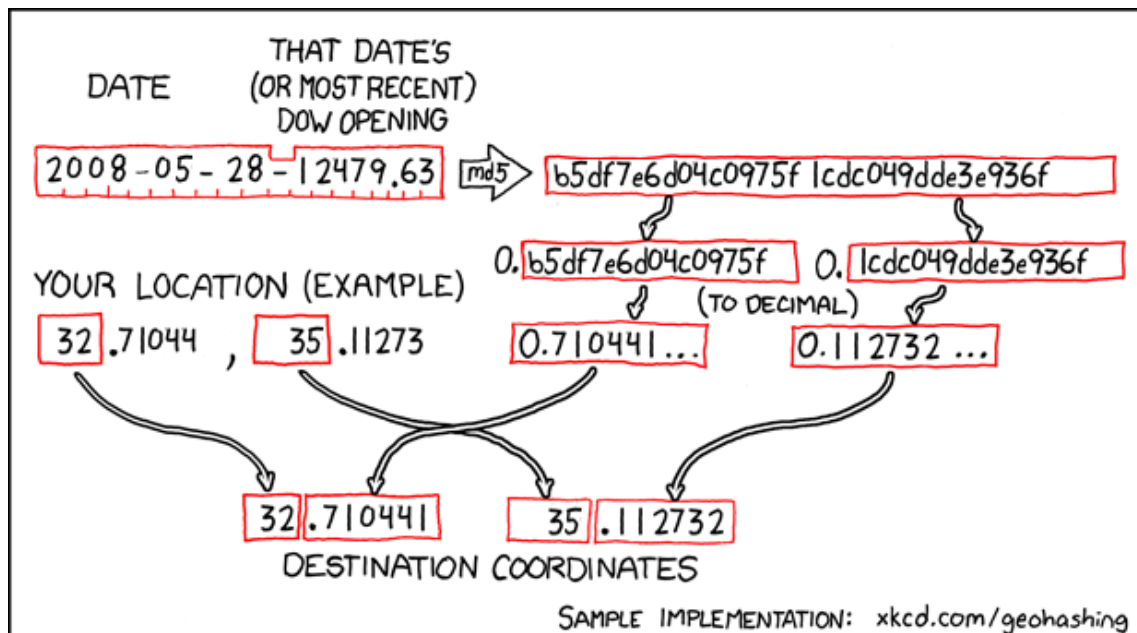
32.710441° N

35.112732° E

Kiryat Tiv'on, Haifa District, Israel



## How this geohash location was calculated



Geohashing is an adventure game, first described in xkcd comic #426. Every day, effectively random locations are generated by an algorithm and people try to get there. To find out more, or join in the fun yourself, visit <http://geohashing.org/>

The place to talk about this particular expedition is at [http://geohashing.org/2008-05-28\\_32\\_35](http://geohashing.org/2008-05-28_32_35)

