



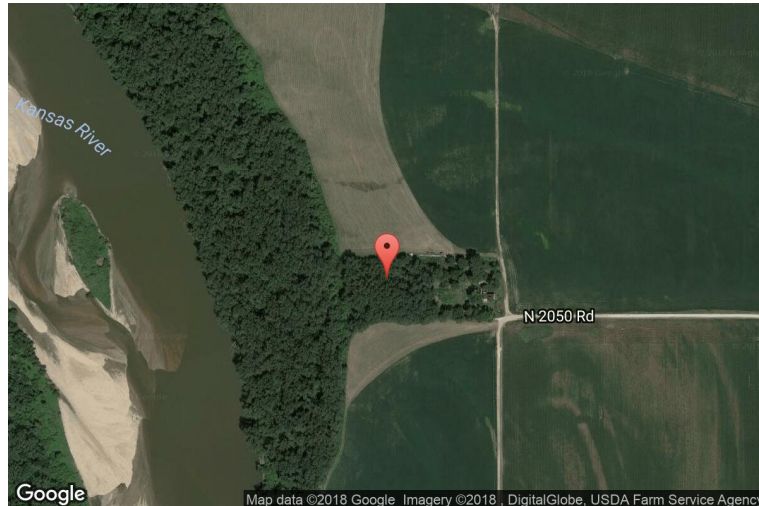
xkcd geohashing

The internet was here!

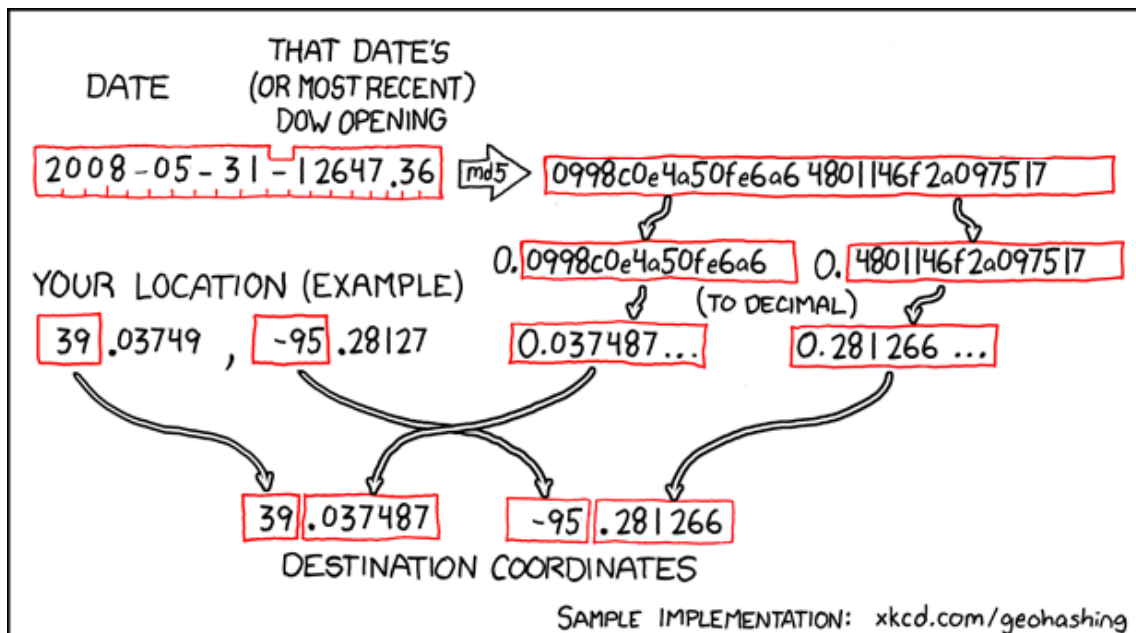
Geohash for 39, -95 on 2008-05-31

39.037487° N
95.281266° W

Lawrence, Kansas,
United States



How this geohash location was calculated



Geohashing is an adventure game, first described in xkcd comic #426. Every day, effectively random locations are generated by an algorithm and people try to get there. To find out more, or join in the fun yourself, visit <http://geohashing.org/>

The place to talk about this particular expedition is at http://geohashing.org/2008-05-31_39_-95

