



xkcd geohashing

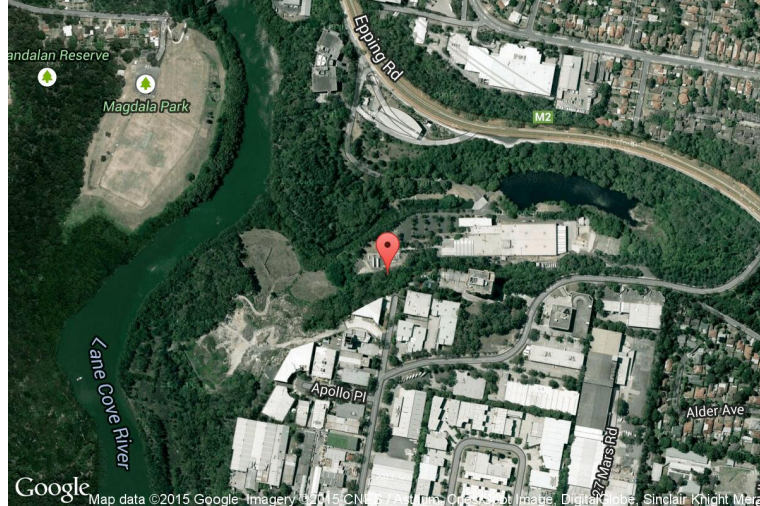
The internet was here!

Geohash for -33, 151 on 2008-10-06

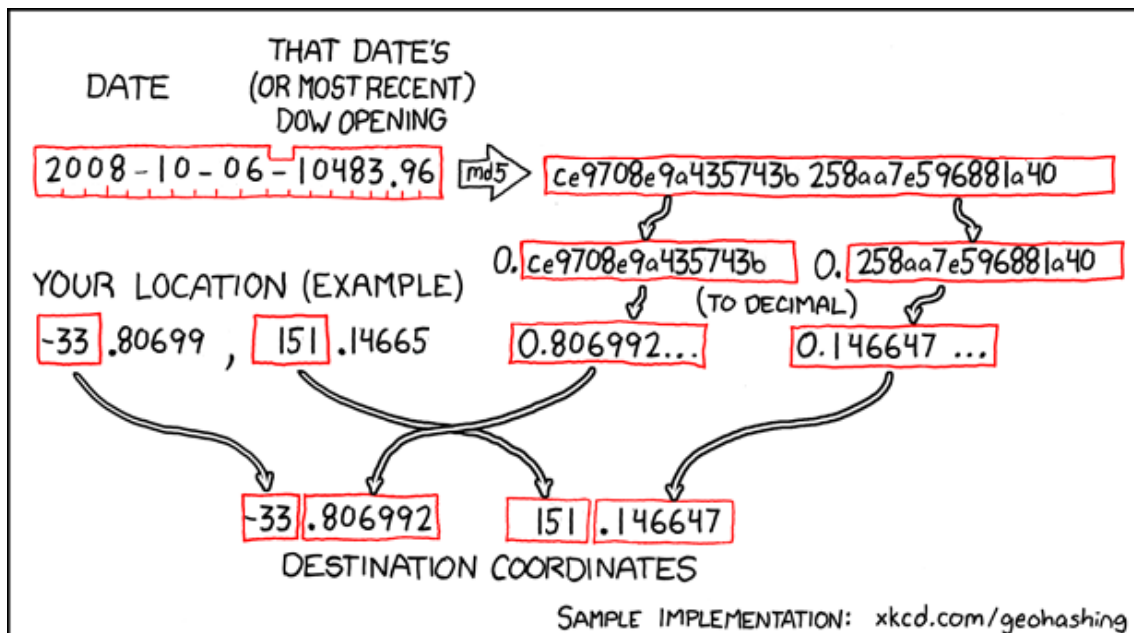
33.806992° S

151.146647° E

Sydney, New South
Wales, Australia



How this geohash location was calculated



Geohashing is an adventure game, first described in xkcd comic #426. Every day, effectively random locations are generated by an algorithm and people try to get there. To find out more, or join in the fun yourself, visit <http://geohashing.org/>

The place to talk about this particular expedition is at http://geohashing.org/2008-10-06_-33_151

