



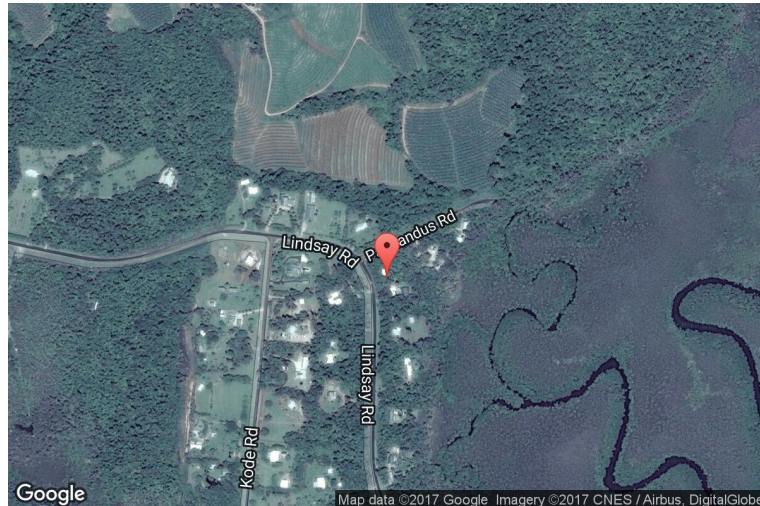
# xkcd geohashing

*The internet was here!*

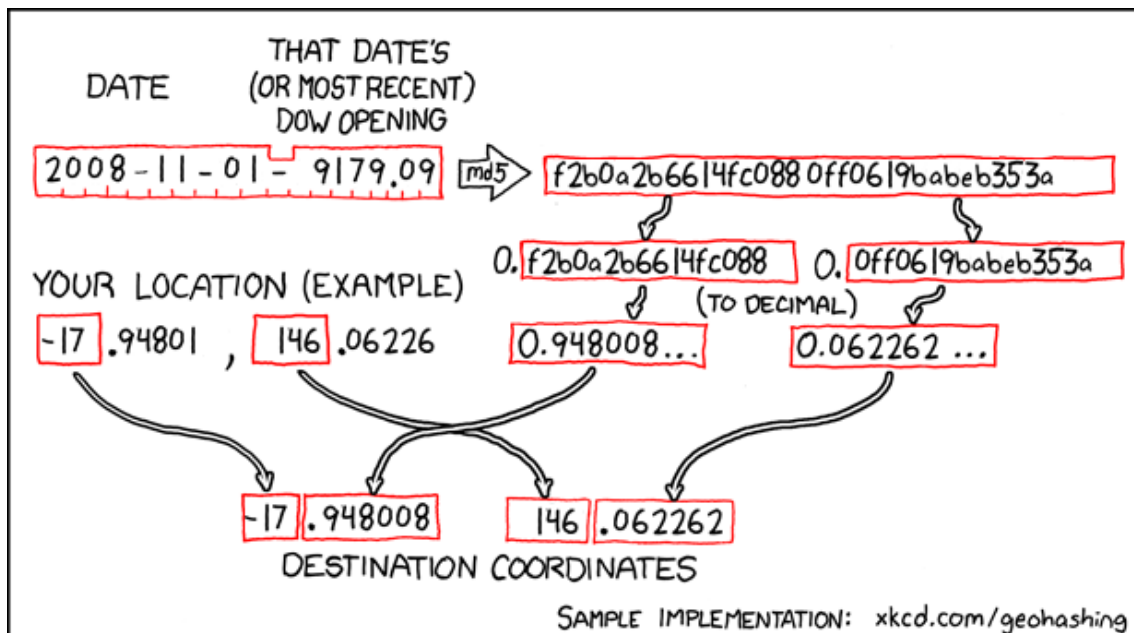
## Geohash for -17, 146 on 2008-11-01

17.948008° S  
146.062262° E

Carmoo,  
Queensland,  
Australia



## How this geohash location was calculated



Geohashing is an adventure game, first described in xkcd comic #426. Every day, effectively random locations are generated by an algorithm and people try to get there. To find out more, or join in the fun yourself, visit <http://geohashing.org/>

The place to talk about this particular expedition is at [http://geohashing.org/2008-11-01\\_-17\\_146](http://geohashing.org/2008-11-01_-17_146)

