



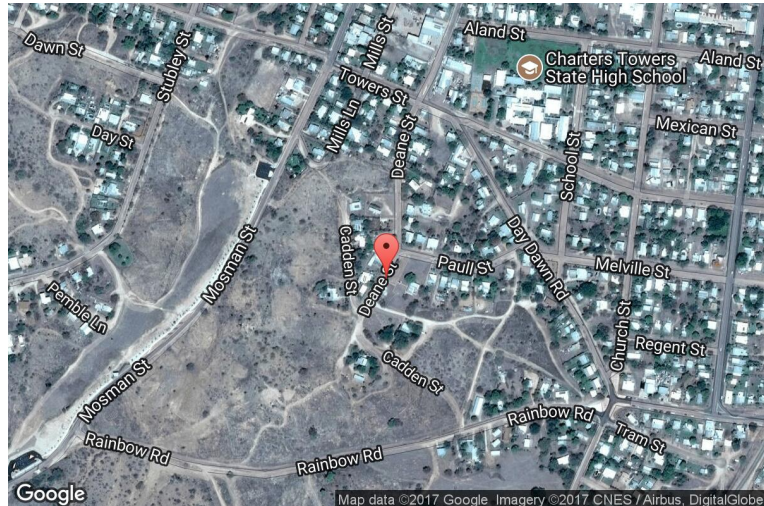
xkcd geohashing

The internet was here!

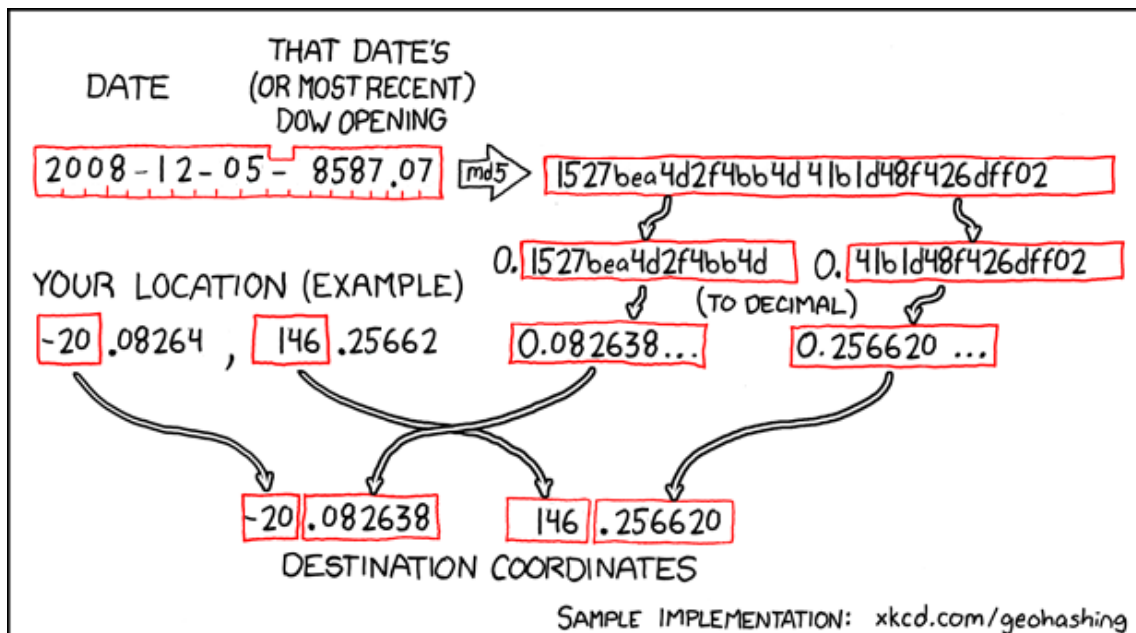
Geohash for -20, 146 on 2008-12-05

20.082638° S
146.25662° E

Charters Towers,
Queensland,
Australia



How this geohash location was calculated



Geohashing is an adventure game, first described in xkcd comic #426. Every day, effectively random locations are generated by an algorithm and people try to get there. To find out more, or join in the fun yourself, visit <http://geohashing.org/>

The place to talk about this particular expedition is at http://geohashing.org/2008-12-05_-20_146

