



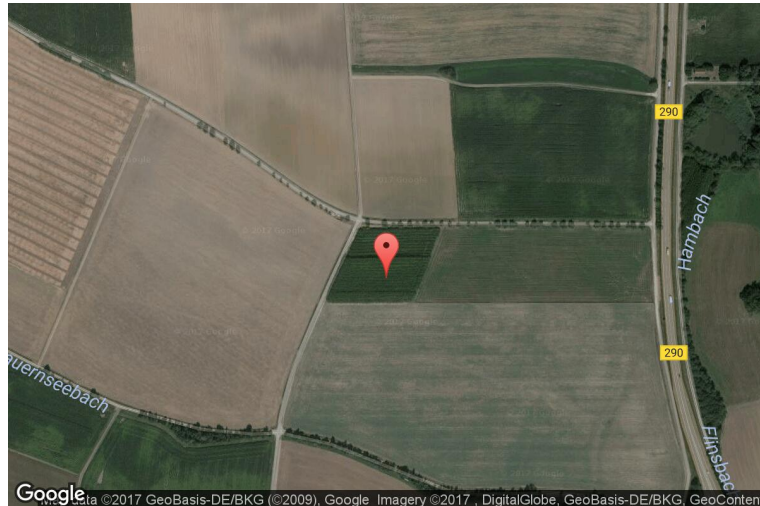
# xkcd geohashing

*The internet was here!*

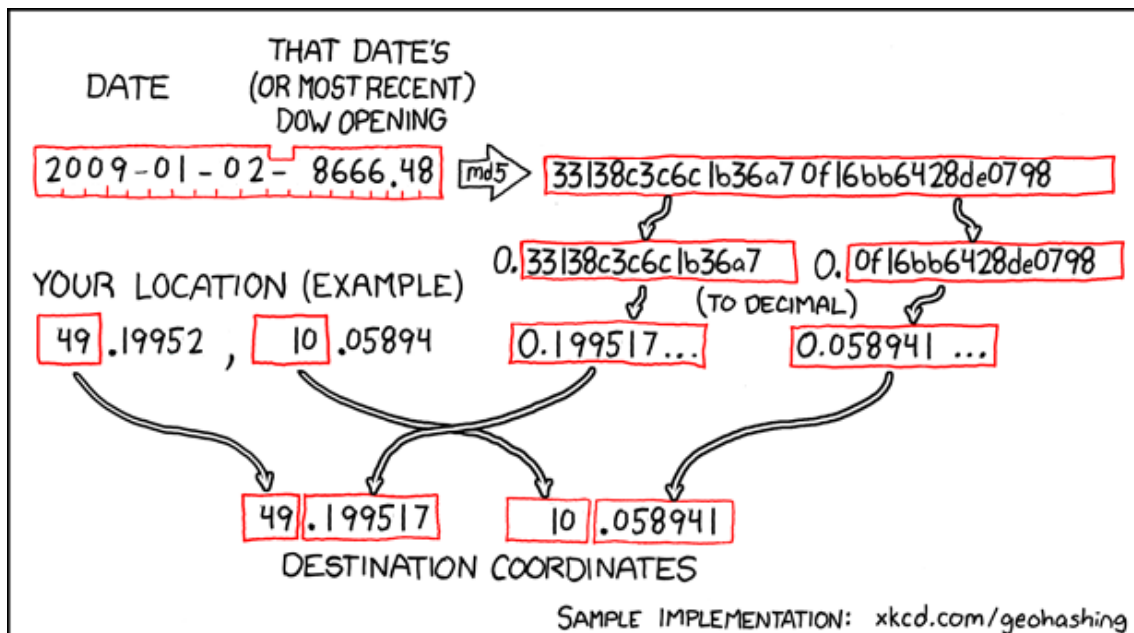
## Geohash for 49, 10 on 2009-01-02

49.199517° N  
10.058941° E

Satteldorf, Baden-  
Württemberg,  
Germany



## How this geohash location was calculated



Geohashing is an adventure game, first described in xkcd comic #426. Every day, effectively random locations are generated by an algorithm and people try to get there. To find out more, or join in the fun yourself, visit <http://geohashing.org/>

The place to talk about this particular expedition is at [http://geohashing.org/2009-01-02\\_49\\_10](http://geohashing.org/2009-01-02_49_10)

