



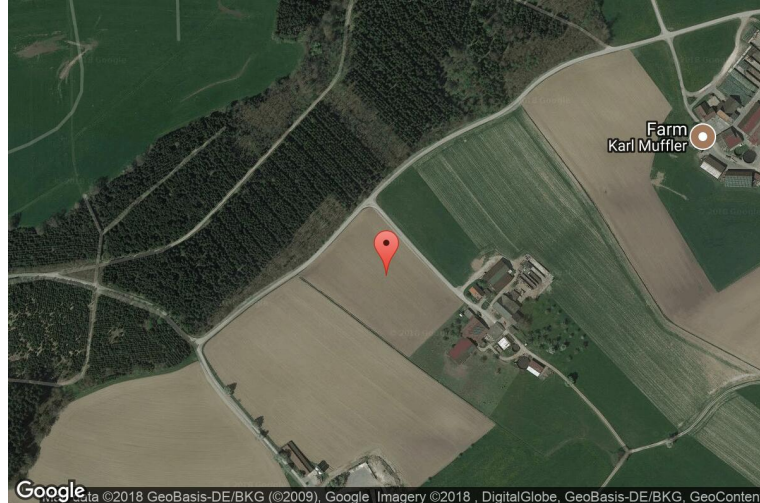
xkcd geohashing

The internet was here!

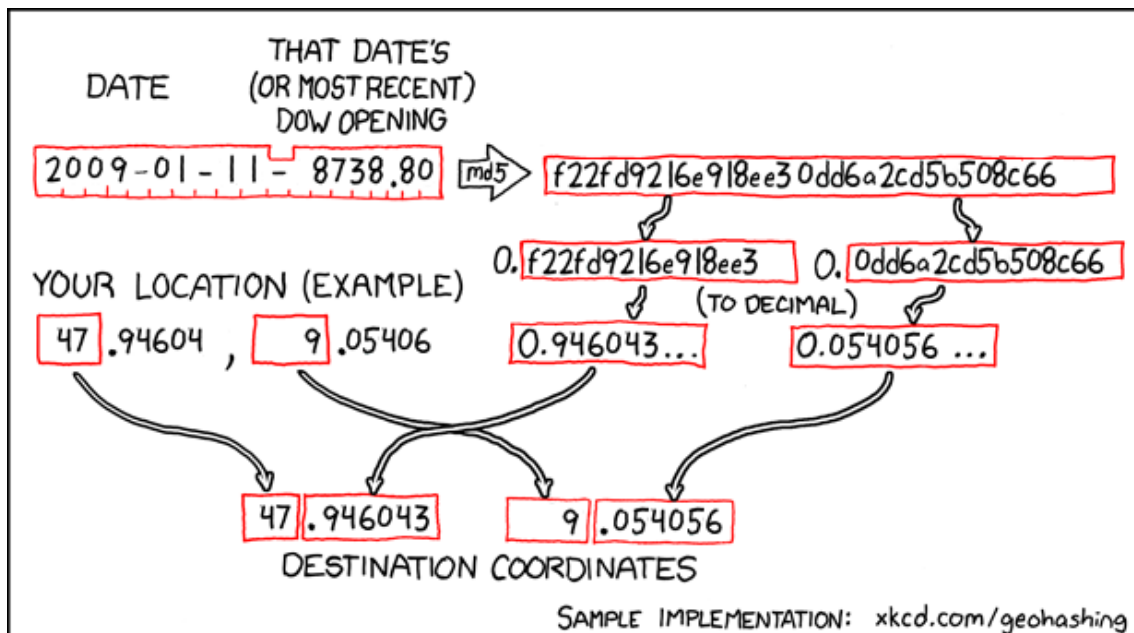
Geohash for 47, 9 on 2009-01-11

47.946043° N
9.054056° E

Sauldorf, Baden-
Württemberg,
Germany



How this geohash location was calculated



Geohashing is an adventure game, first described in xkcd comic #426. Every day, effectively random locations are generated by an algorithm and people try to get there. To find out more, or join in the fun yourself, visit <http://geohashing.org/>

The place to talk about this particular expedition is at http://geohashing.org/2009-01-11_47_9

