



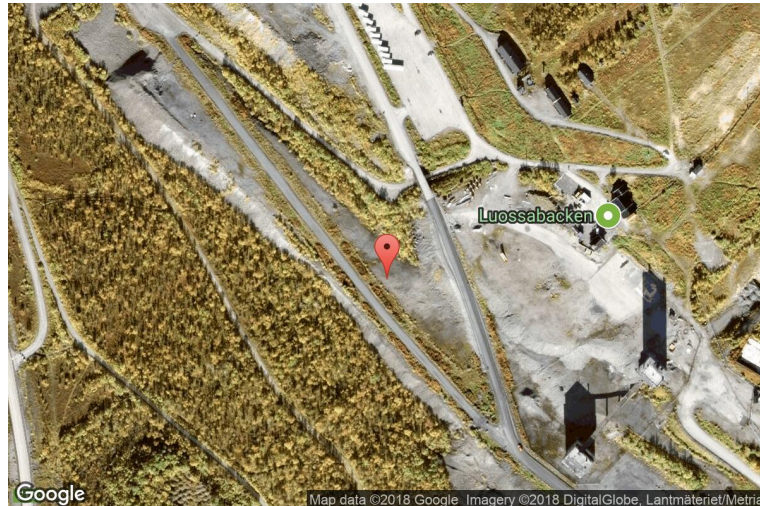
xkcd geohashing

The internet was here!

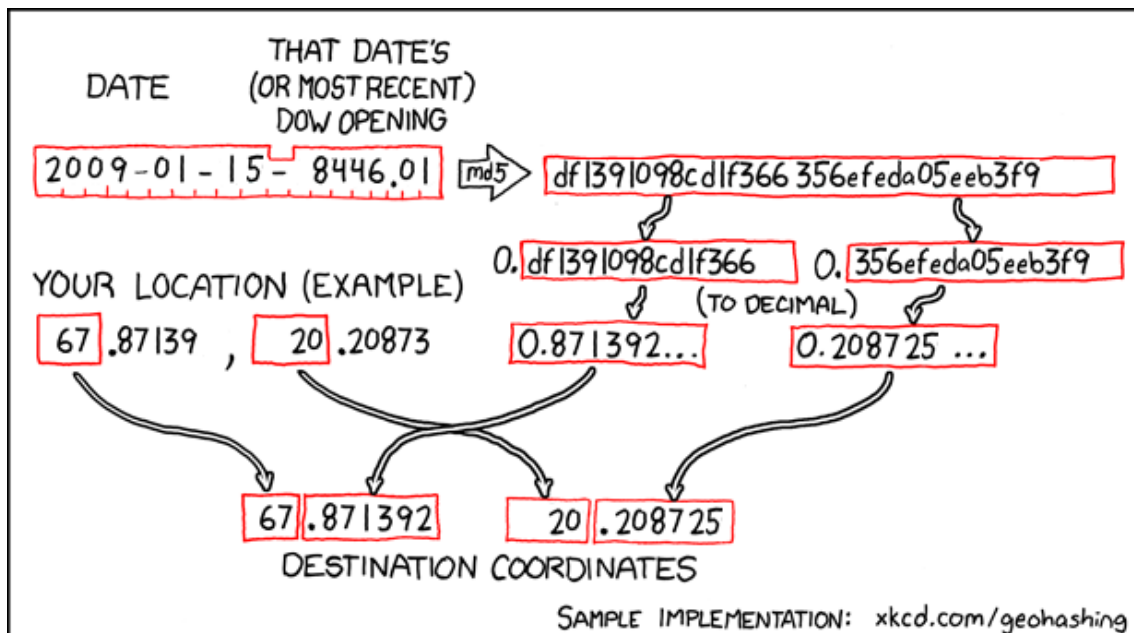
Geohash for 67, 20 on 2009-01-15

67.871392° N
20.208725° E

Kiruna, Norrbottens
län, Sweden



How this geohash location was calculated



Geohashing is an adventure game, first described in xkcd comic #426. Every day, effectively random locations are generated by an algorithm and people try to get there. To find out more, or join in the fun yourself, visit <http://geohashing.org/>

The place to talk about this particular expedition is at http://geohashing.org/2009-01-15_67_20

