



# xkcd geohashing

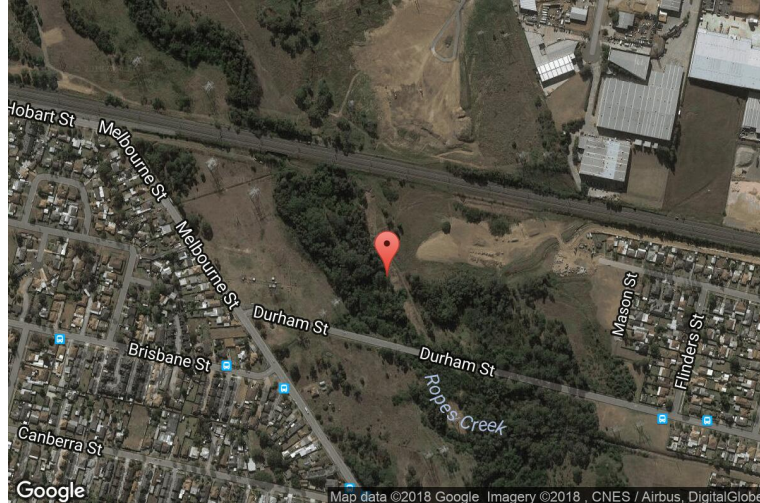
*The internet was here!*

## Geohash for -33, 150 on 2009-01-29

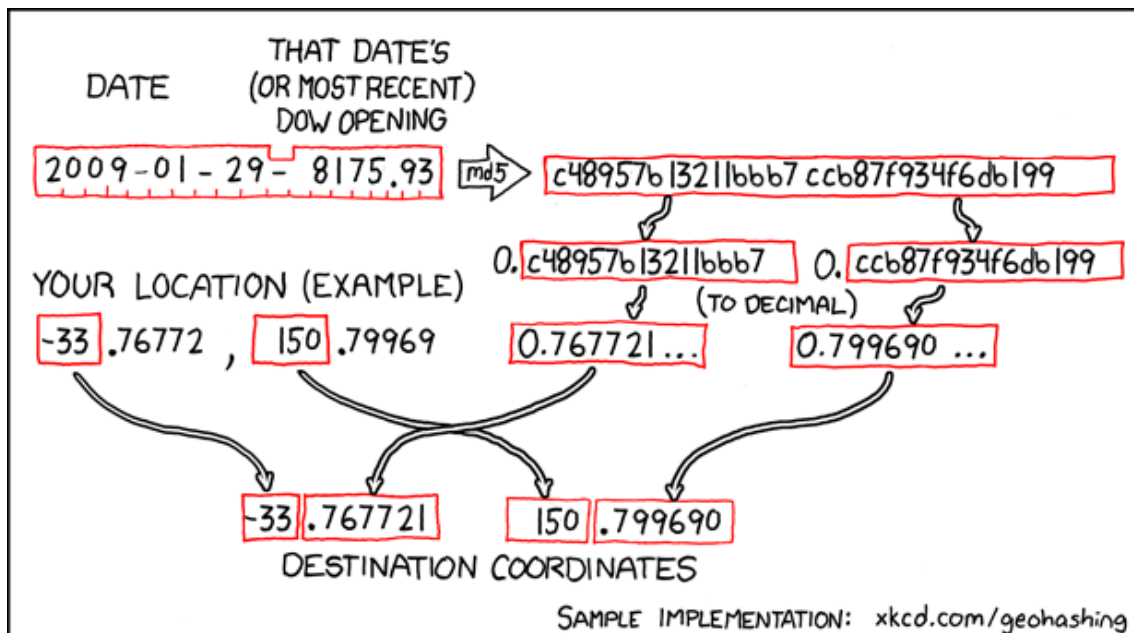
33.767721° S

150.79969° E

Sydney, New South  
Wales, Australia



## How this geohash location was calculated



Geohashing is an adventure game, first described in xkcd comic #426. Every day, effectively random locations are generated by an algorithm and people try to get there. To find out more, or join in the fun yourself, visit <http://geohashing.org/>

The place to talk about this particular expedition is at [http://geohashing.org/2009-01-29\\_-33\\_150](http://geohashing.org/2009-01-29_-33_150)

