

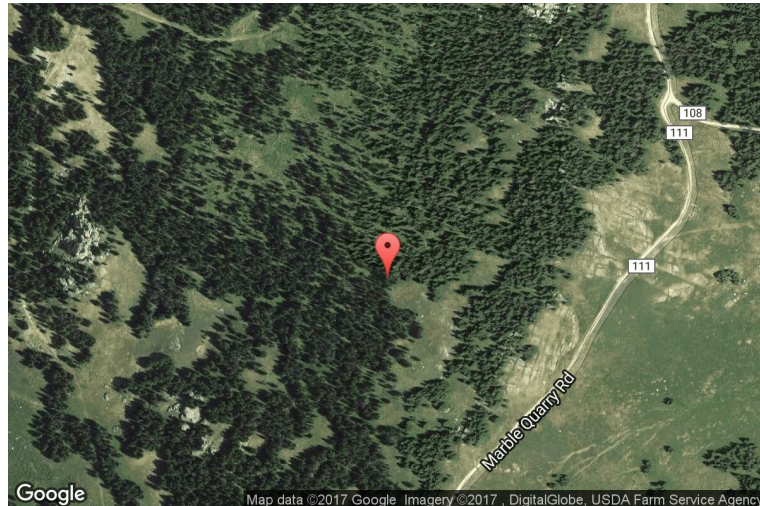
xkcd geohashing

The internet was here!

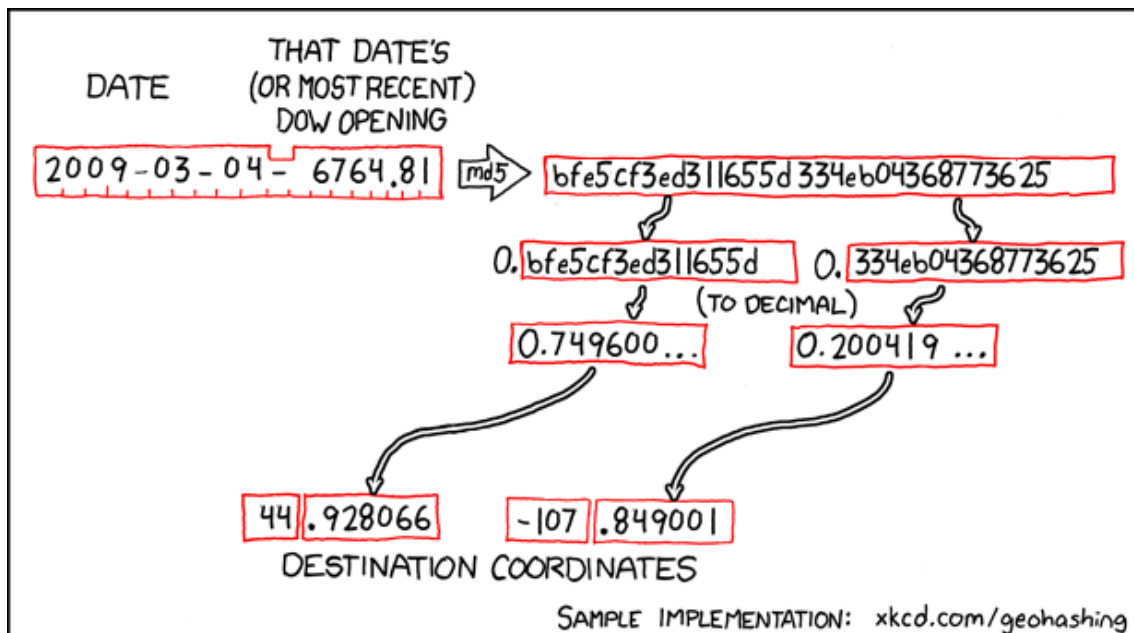
Globalhash for 2009-03-04

44.928066° N
107.849001° W

Parkman, Wyoming,
United States



How this geohash location was calculated



Geohashing is an adventure game, first described in xkcd comic #426. Every day, effectively random locations are generated by an algorithm and people try to get there. To find out more, or join in the fun yourself, visit <http://geohashing.org/>

The place to talk about this particular expedition is at http://geohashing.org/2009-03-04_global

