



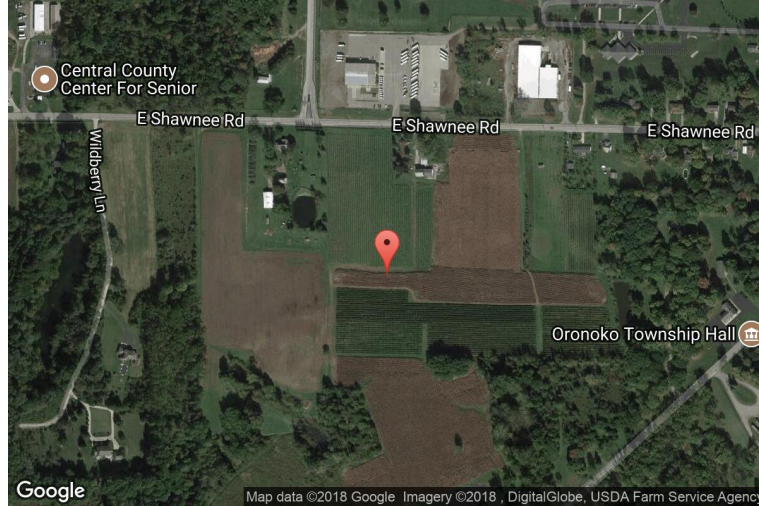
xkcd geohashing

The internet was here!

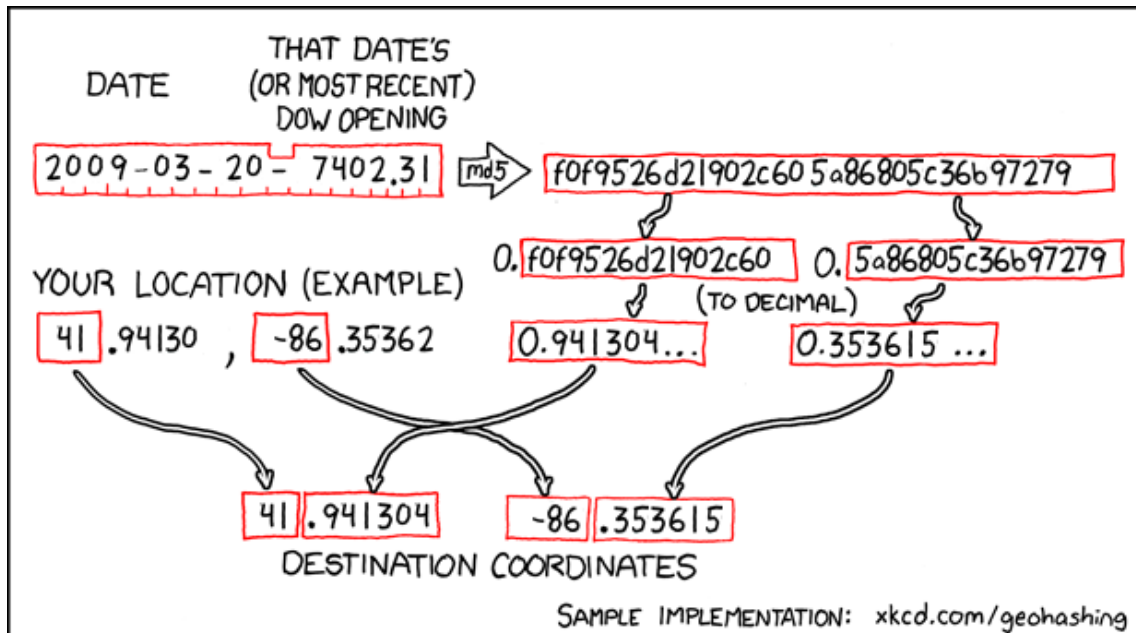
Geohash for 41, -86 on 2009-03-20

41.941304° N
86.353615° W

Berrien Springs,
Michigan, United
States of America



How this geohash location was calculated



Geohashing is an adventure game, first described in xkcd comic #426. Every day, effectively random locations are generated by an algorithm and people try to get there. To find out more, or join in the fun yourself, visit <http://geohashing.org/>

The place to talk about this particular expedition is at http://geohashing.org/2009-03-20_41_-86

