



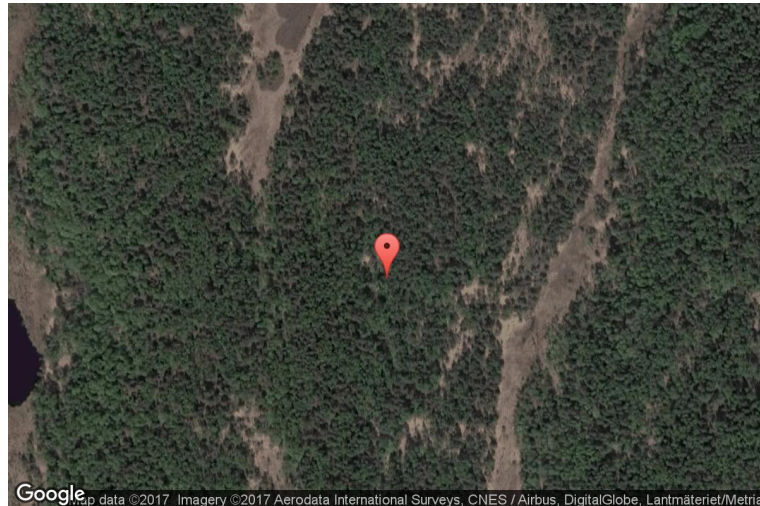
xkcd geohashing

The internet was here!

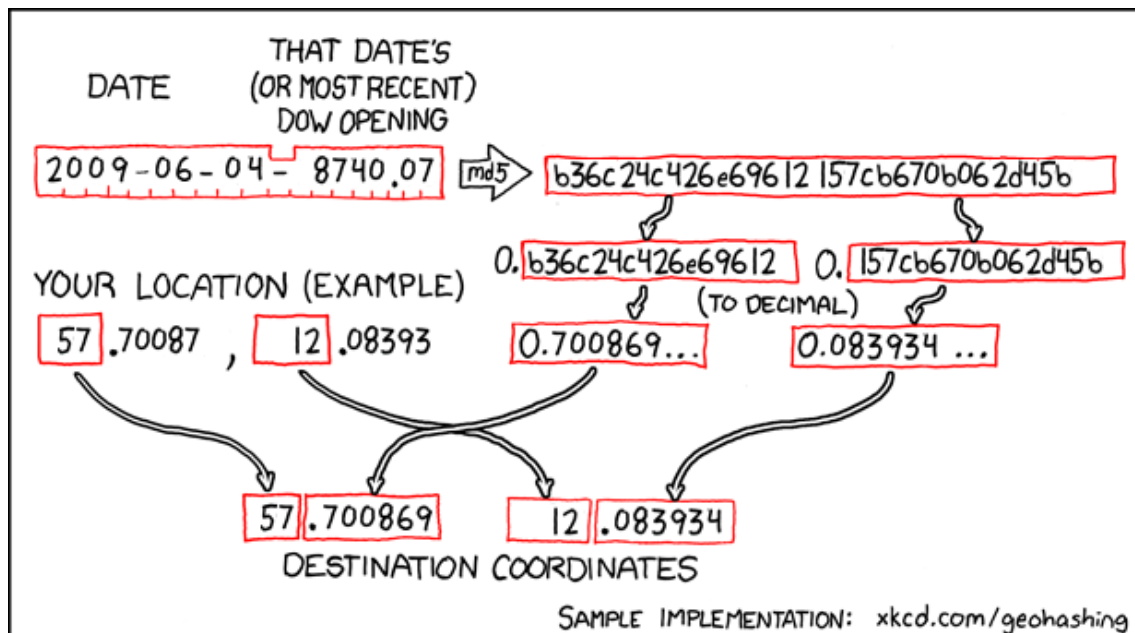
Geohash for 57, 12 on 2009-06-04

57.700869° N
12.083934° E

Sävedalen, Västra
Götalands län,
Sweden



How this geohash location was calculated



Geohashing is an adventure game, first described in xkcd comic #426. Every day, effectively random locations are generated by an algorithm and people try to get there. To find out more, or join in the fun yourself, visit <http://geohashing.org/>

The place to talk about this particular expedition is at http://geohashing.org/2009-06-04_57_12

