



xkcd geohashing

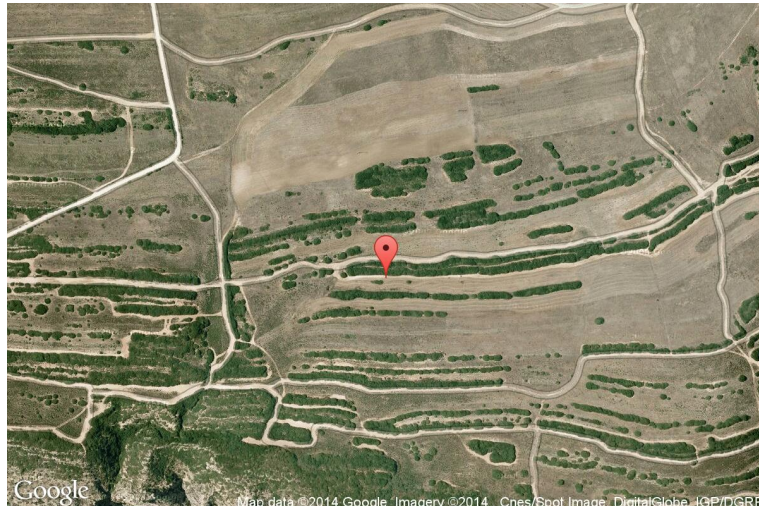
The internet was here!

Geohash for 38, -9 on 2009-10-07

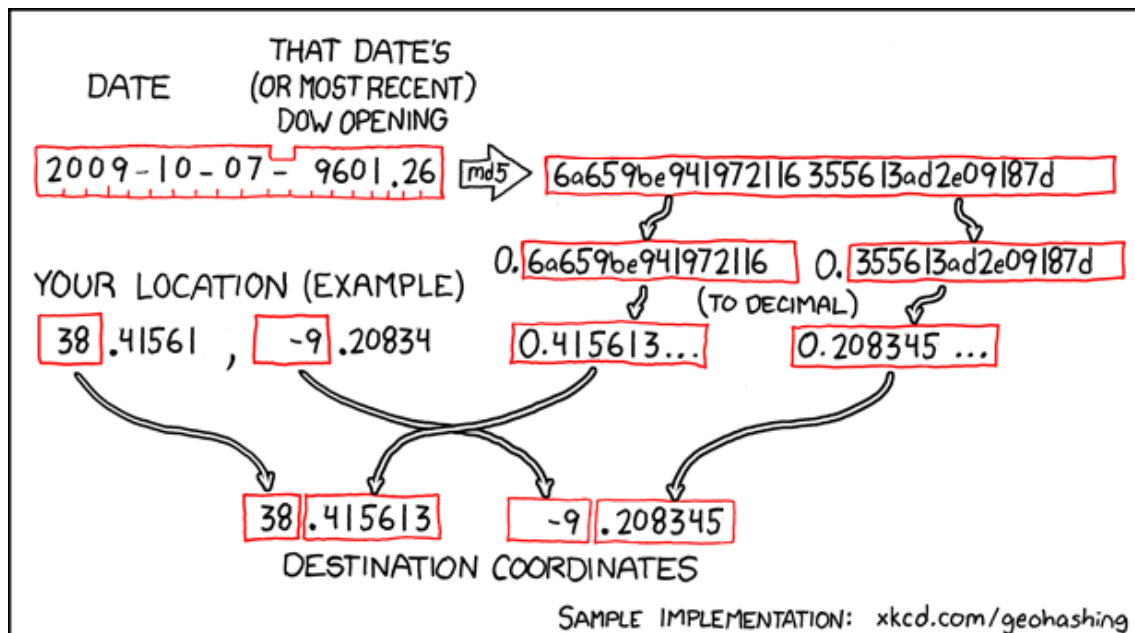
38.415613° N

9.208345° W

Setúbal, Portugal



How this geohash location was calculated



Geohashing is an adventure game, first described in xkcd comic #426. Every day, effectively random locations are generated by an algorithm and people try to get there. To find out more, or join in the fun yourself, visit <http://geohashing.org/>

The place to talk about this particular expedition is at http://geohashing.org/2009-10-07_38_-9

