



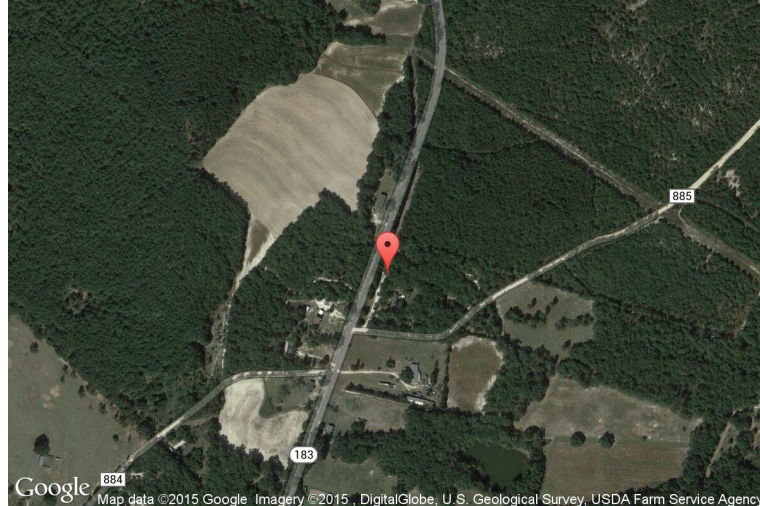
# xkcd geohashing

*The internet was here!*

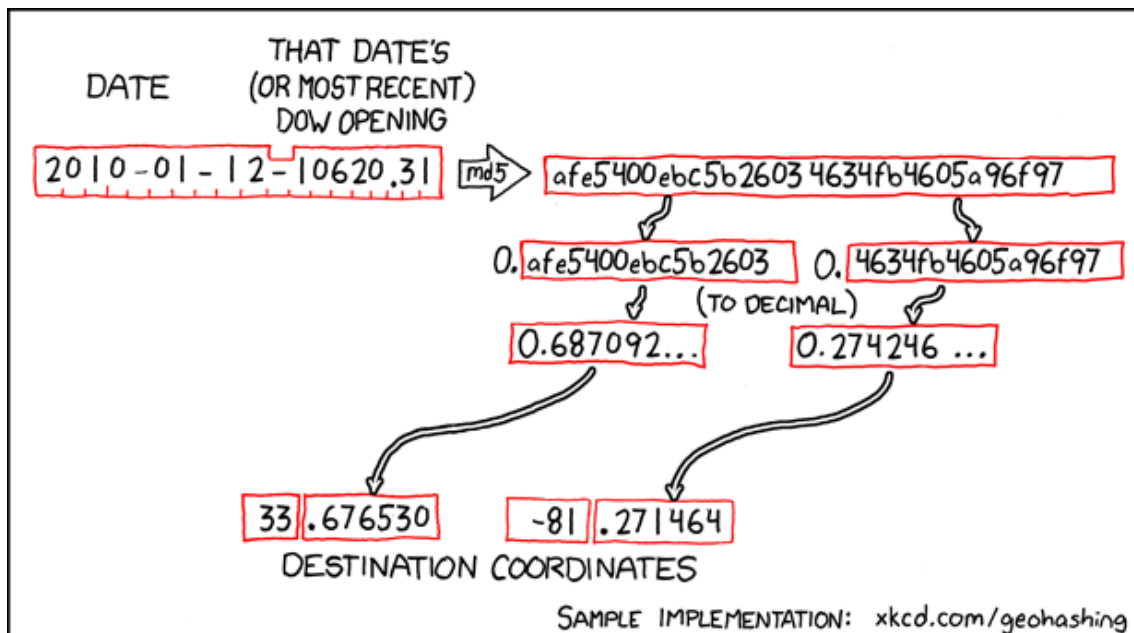
## Globalhash for 2010-01-12

33.67653° N  
81.271464° W

Salley, South  
Carolina, United  
States



## How this geohash location was calculated



Geohashing is an adventure game, first described in xkcd comic #426. Every day, effectively random locations are generated by an algorithm and people try to get there. To find out more, or join in the fun yourself, visit <http://geohashing.org/>

The place to talk about this particular expedition is at [http://geohashing.org/2010-01-12\\_global](http://geohashing.org/2010-01-12_global)

