



# xkcd geohashing

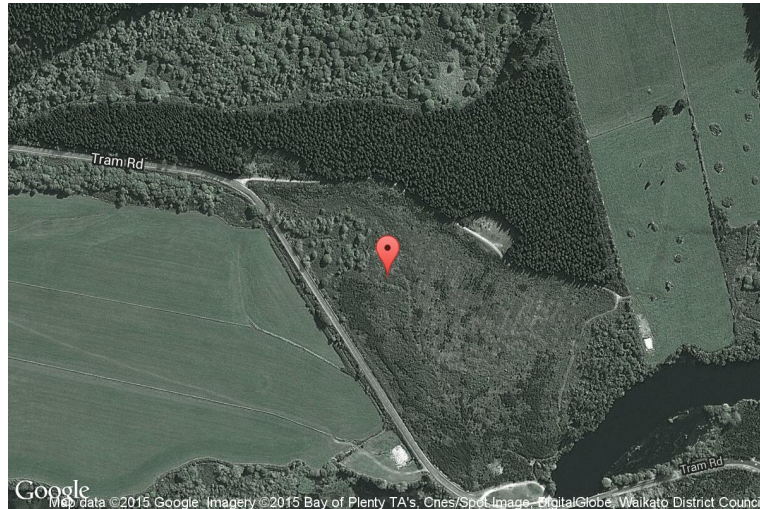
*The internet was here!*

## Geohash for -38, 175 on 2010-01-29

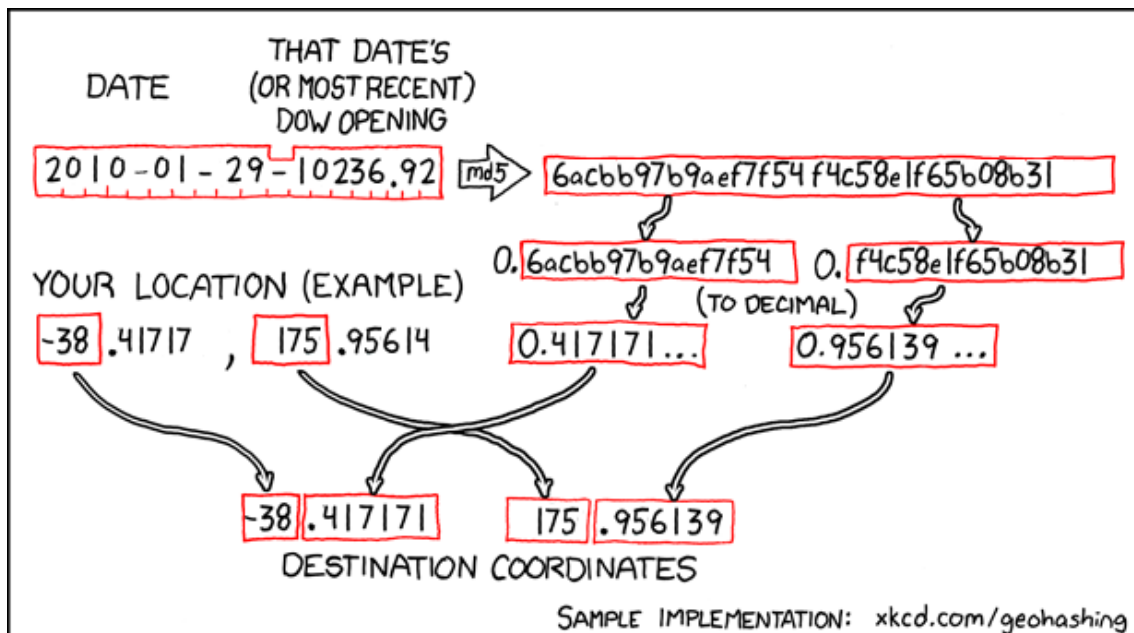
38.417171° S

175.956139° E

Rotorua, Bay of  
Plenty, New Zealand



## How this geohash location was calculated



Geohashing is an adventure game, first described in xkcd comic #426. Every day, effectively random locations are generated by an algorithm and people try to get there. To find out more, or join in the fun yourself, visit <http://geohashing.org/>

The place to talk about this particular expedition is at [http://geohashing.org/2010-01-29\\_-38\\_175](http://geohashing.org/2010-01-29_-38_175)

