



xkcd geohashing

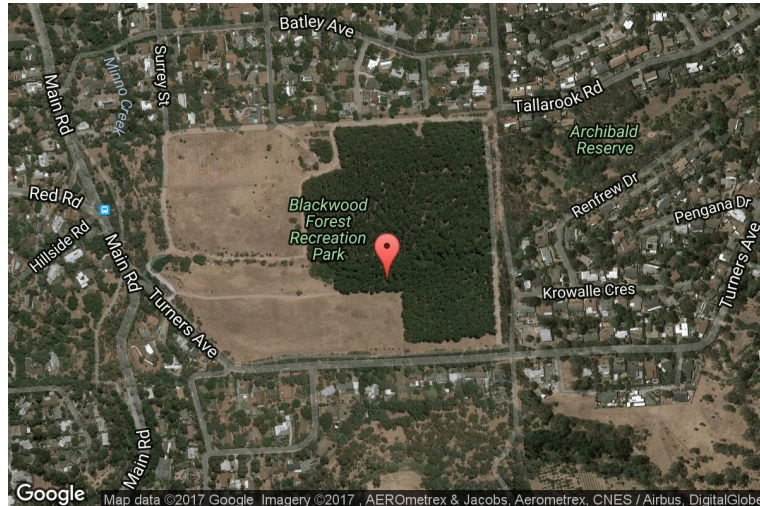
The internet was here!

Geohash for -35, 138 on 2010-02-04

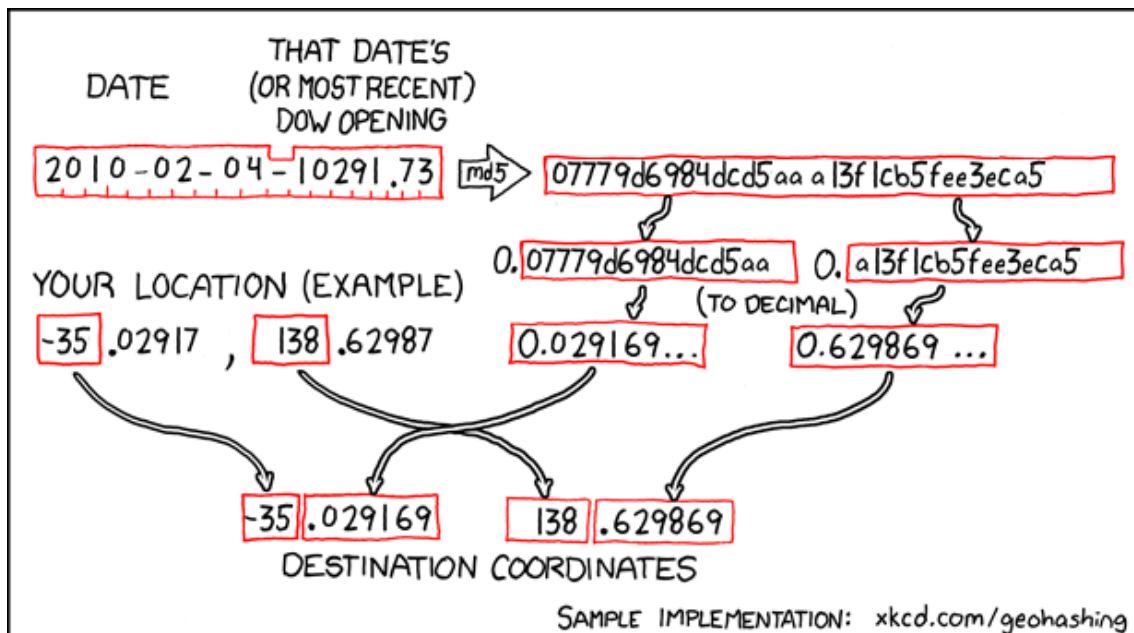
35.029169° S

138.629869° E

Adelaide, South
Australia, Australia



How this geohash location was calculated



Geohashing is an adventure game, first described in xkcd comic #426. Every day, effectively random locations are generated by an algorithm and people try to get there. To find out more, or join in the fun yourself, visit <http://geohashing.org/>

The place to talk about this particular expedition is at http://geohashing.org/2010-02-04_-35_138

