



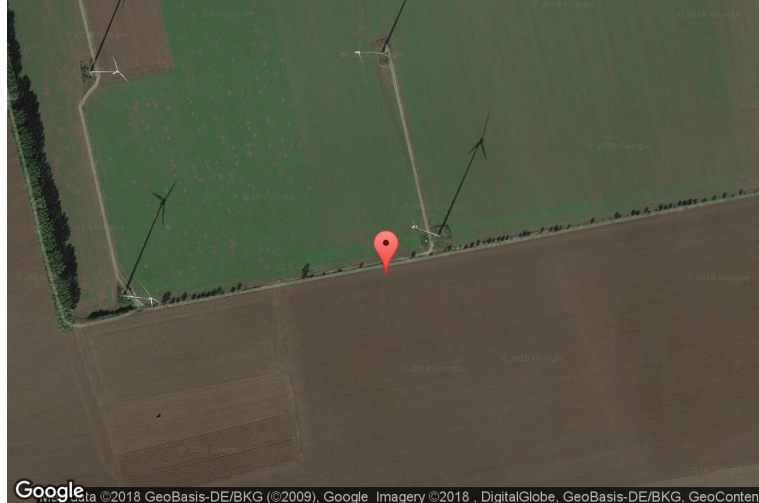
xkcd geohashing

The internet was here!

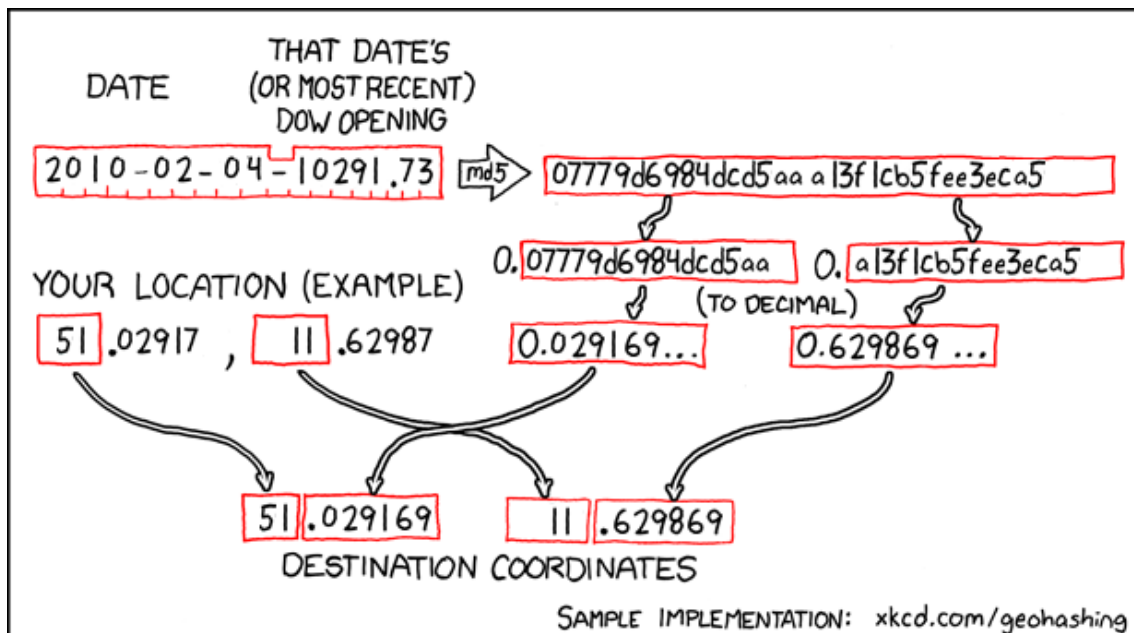
Geohash for 51, 11 on 2010-02-04

51.029169° N
11.629869° E

Saaleplatte,
Thüringen, Germany



How this geohash location was calculated



Geohashing is an adventure game, first described in xkcd comic #426. Every day, effectively random locations are generated by an algorithm and people try to get there. To find out more, or join in the fun yourself, visit <http://geohashing.org/>

The place to talk about this particular expedition is at http://geohashing.org/2010-02-04_51_11

