



# xkcd geohashing

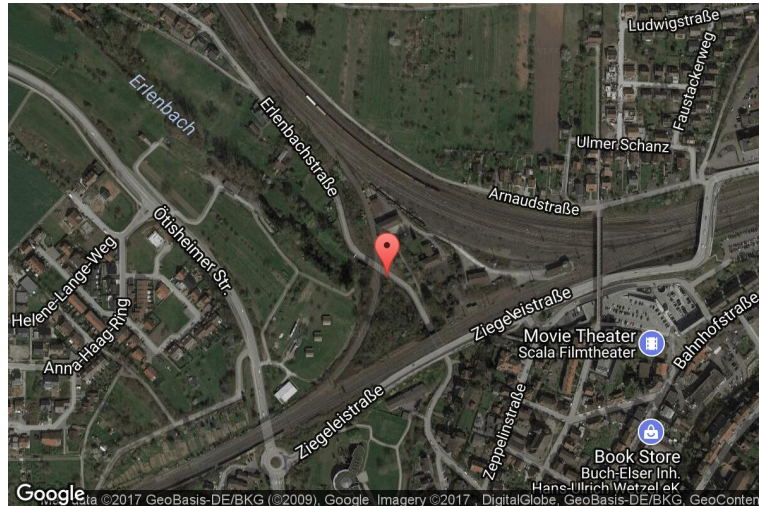
*The internet was here!*

## Geohash for 48, 8 on 2010-03-12

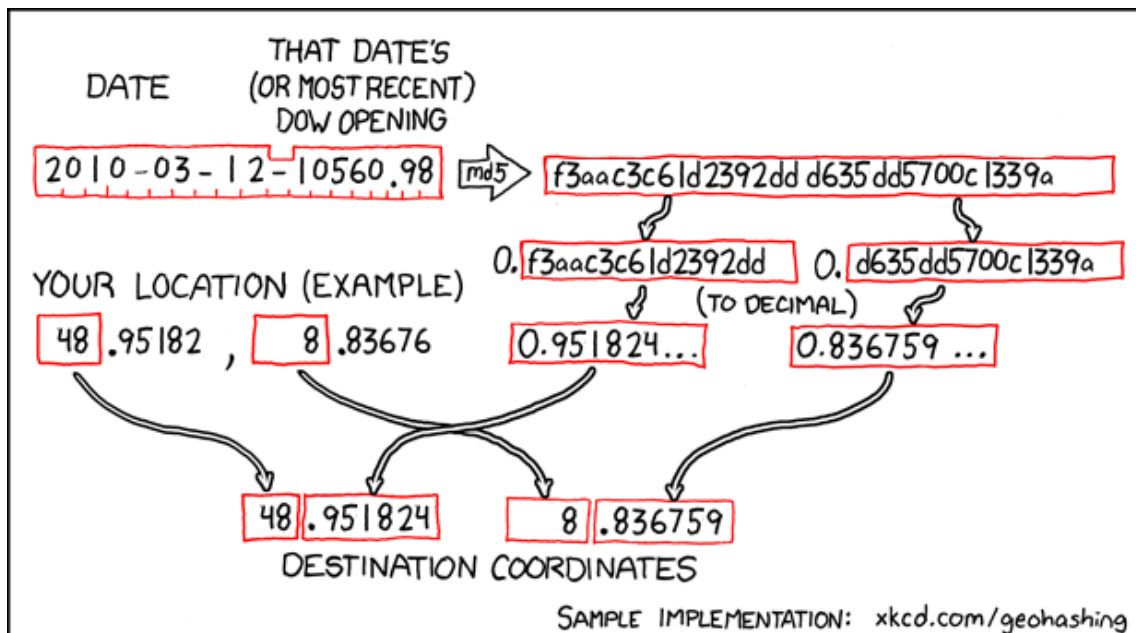
48.951824° N

8.836759° E

Mühlacker, Baden-  
Württemberg,  
Germany



## How this geohash location was calculated



Geohashing is an adventure game, first described in xkcd comic #426. Every day, effectively random locations are generated by an algorithm and people try to get there. To find out more, or join in the fun yourself, visit <http://geohashing.org/>

The place to talk about this particular expedition is at [http://geohashing.org/2010-03-12\\_48\\_8](http://geohashing.org/2010-03-12_48_8)

