



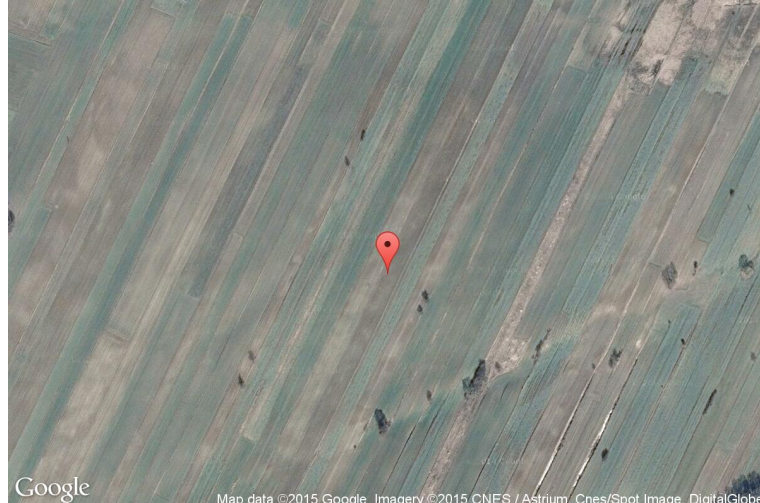
xkcd geohashing

The internet was here!

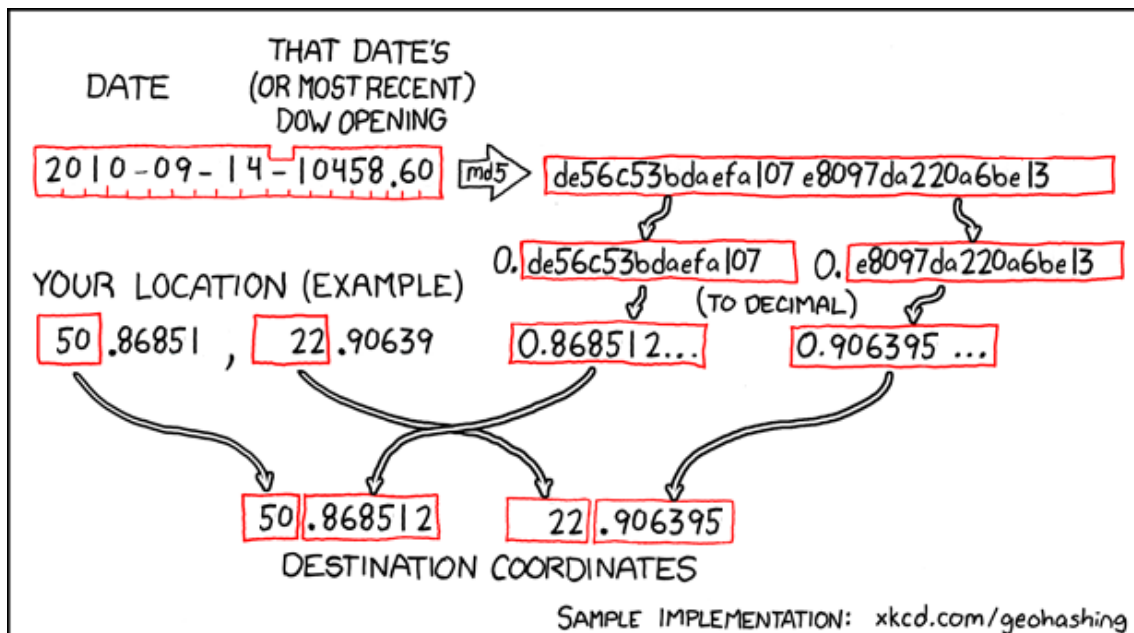
Geohash for 50, 22 on 2010-09-14

50.868512° N
22.906395° E

Równianki, lubelskie,
Poland



How this geohash location was calculated



Geohashing is an adventure game, first described in xkcd comic #426. Every day, effectively random locations are generated by an algorithm and people try to get there. To find out more, or join in the fun yourself, visit <http://geohashing.org/>

The place to talk about this particular expedition is at http://geohashing.org/2010-09-14_50_22

