



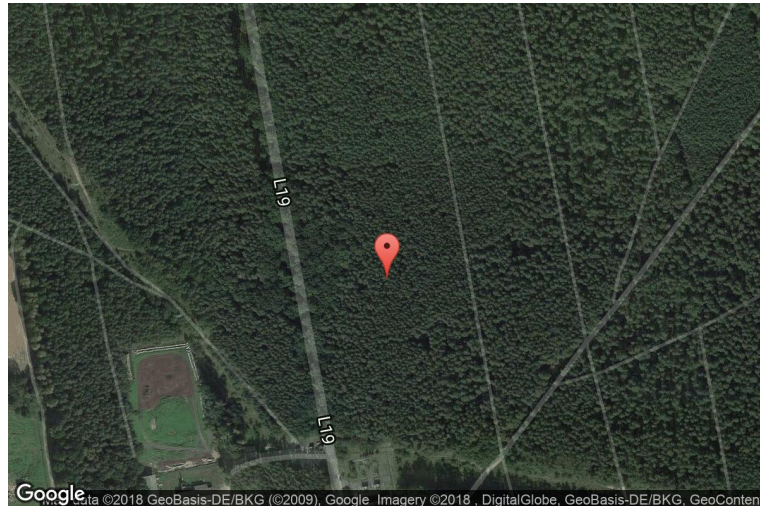
# xkcd geohashing

*The internet was here!*

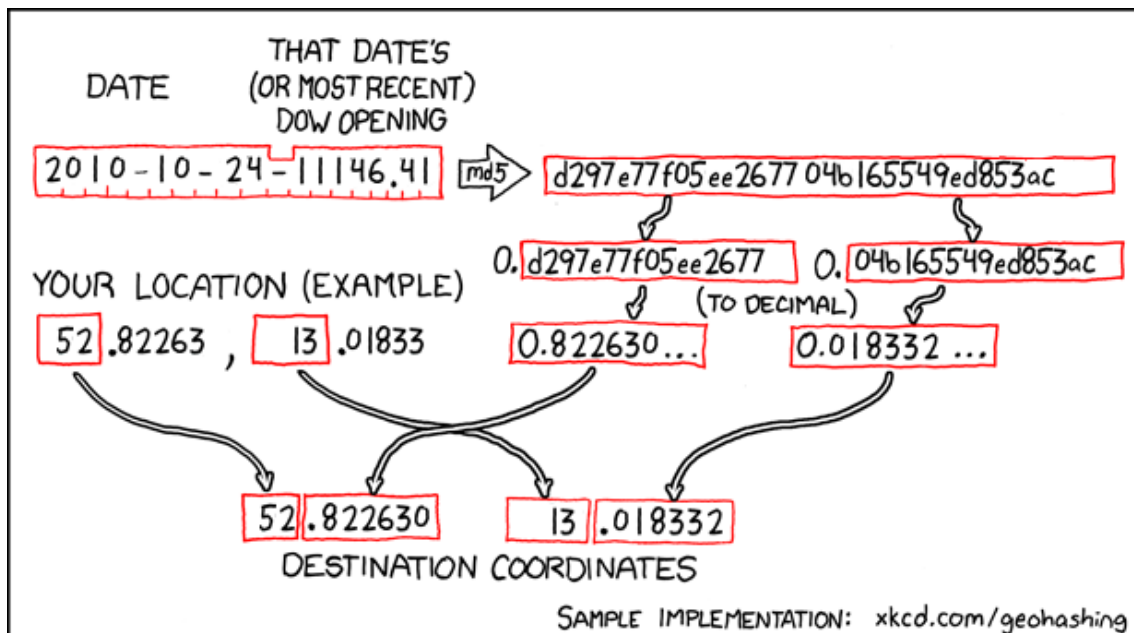
## Geohash for 52, 13 on 2010-10-24

52.82263° N  
13.018332° E

Kremmen,  
Brandenburg,  
Germany



## How this geohash location was calculated



Geohashing is an adventure game, first described in xkcd comic #426. Every day, effectively random locations are generated by an algorithm and people try to get there. To find out more, or join in the fun yourself, visit <http://geohashing.org/>

The place to talk about this particular expedition is at [http://geohashing.org/2010-10-24\\_52\\_13](http://geohashing.org/2010-10-24_52_13)

