



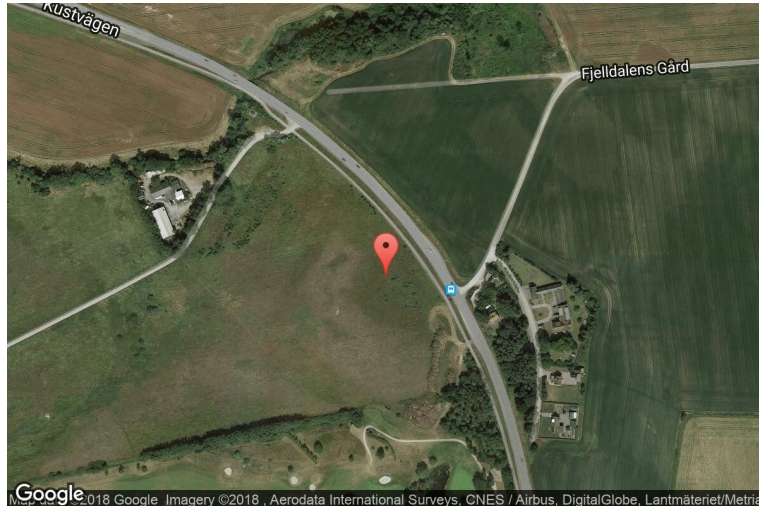
# xkcd geohashing

*The internet was here!*

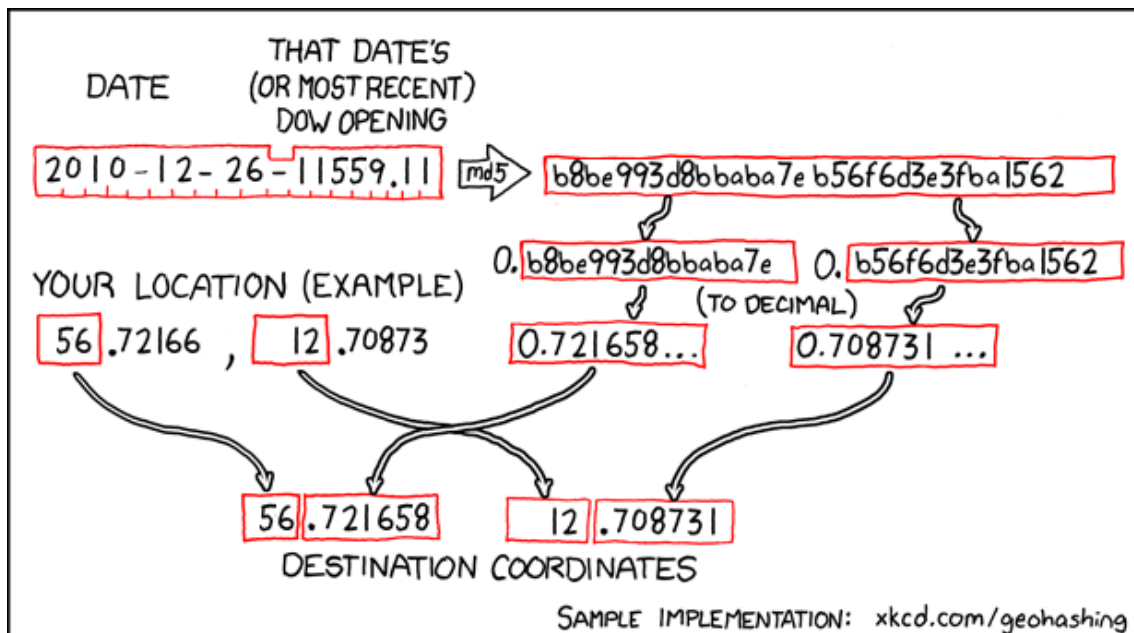
## Geohash for 56, 12 on 2010-12-26

56.721658° N  
12.708731° E

Hallands län,  
Sweden



## How this geohash location was calculated



Geohashing is an adventure game, first described in xkcd comic #426. Every day, effectively random locations are generated by an algorithm and people try to get there. To find out more, or join in the fun yourself, visit <http://geohashing.org/>

The place to talk about this particular expedition is at [http://geohashing.org/2010-12-26\\_56\\_12](http://geohashing.org/2010-12-26_56_12)

