



xkcd geohashing

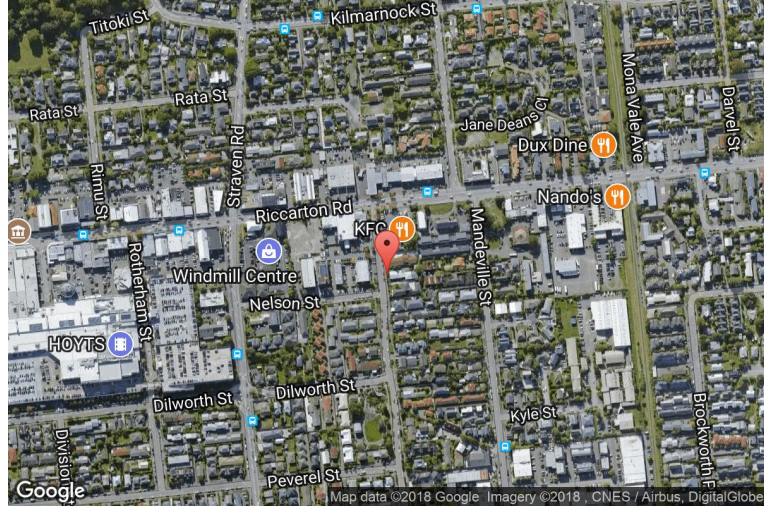
The internet was here!

Geohash for -43, 172 on 2011-04-21

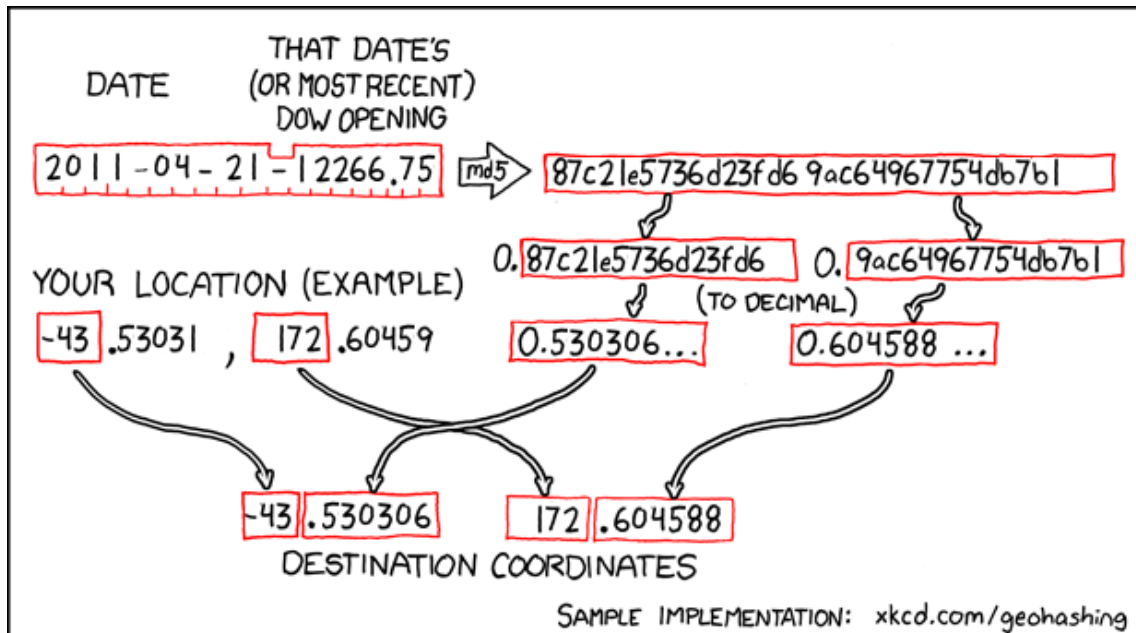
43.530306° S

172.604588° E

Christchurch,
Canterbury, New
Zealand



How this geohash location was calculated



Geohashing is an adventure game, first described in xkcd comic #426. Every day, effectively random locations are generated by an algorithm and people try to get there. To find out more, or join in the fun yourself, visit <http://geohashing.org/>

The place to talk about this particular expedition is at http://geohashing.org/2011-04-21_-43_172

