



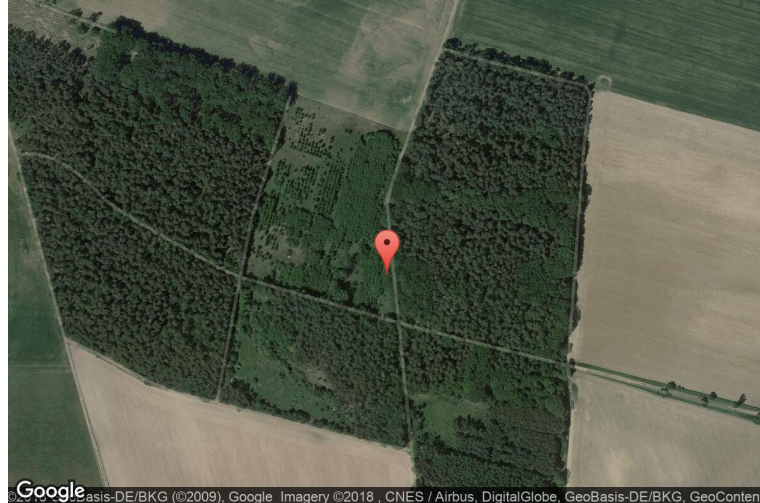
# xkcd geohashing

*The internet was here!*

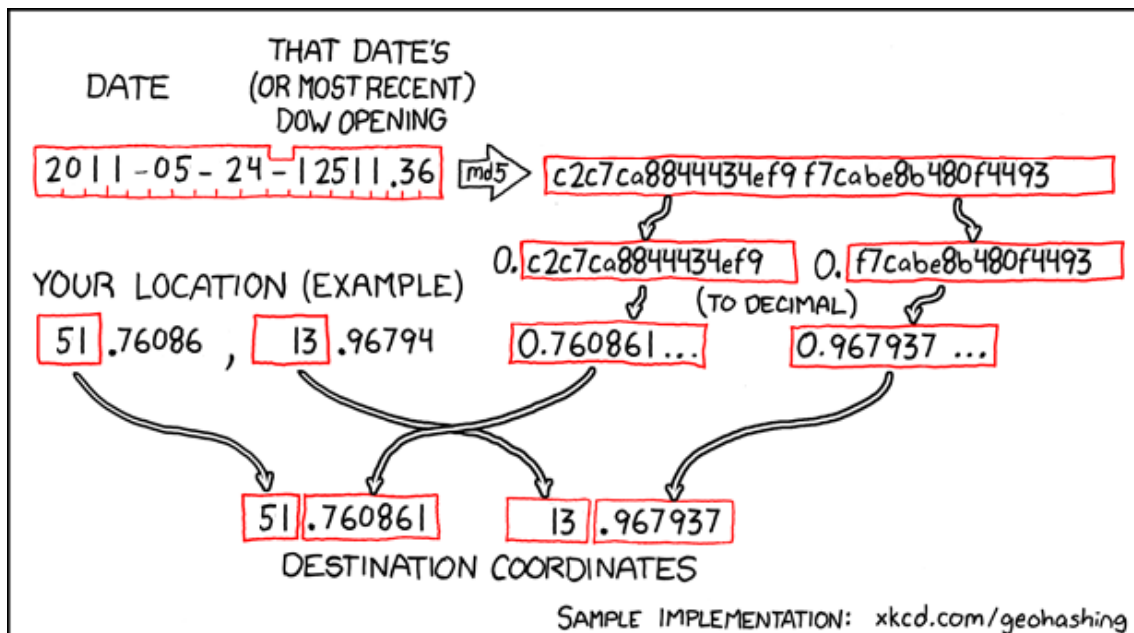
## Geohash for 51, 13 on 2011-05-24

51.760861° N  
13.967937° E

Calau, Brandenburg,  
Germany



## How this geohash location was calculated



Geohashing is an adventure game, first described in xkcd comic #426. Every day, effectively random locations are generated by an algorithm and people try to get there. To find out more, or join in the fun yourself, visit <http://geohashing.org/>

The place to talk about this particular expedition is at [http://geohashing.org/2011-05-24\\_51\\_13](http://geohashing.org/2011-05-24_51_13)

