



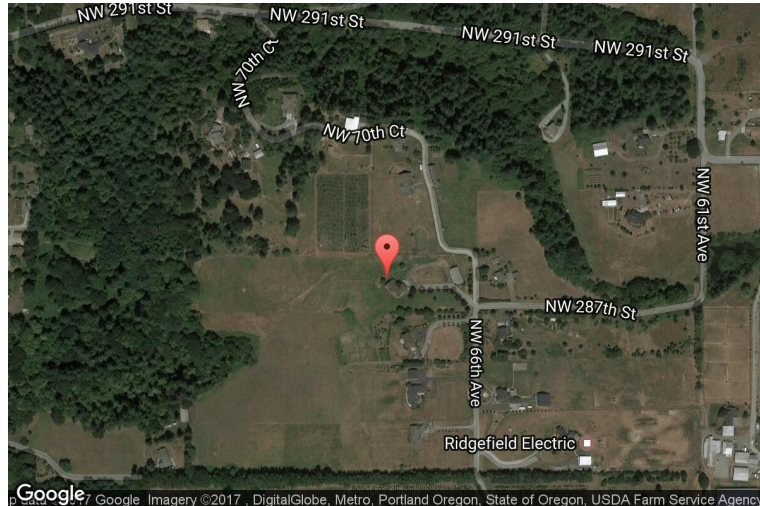
xkcd geohashing

The internet was here!

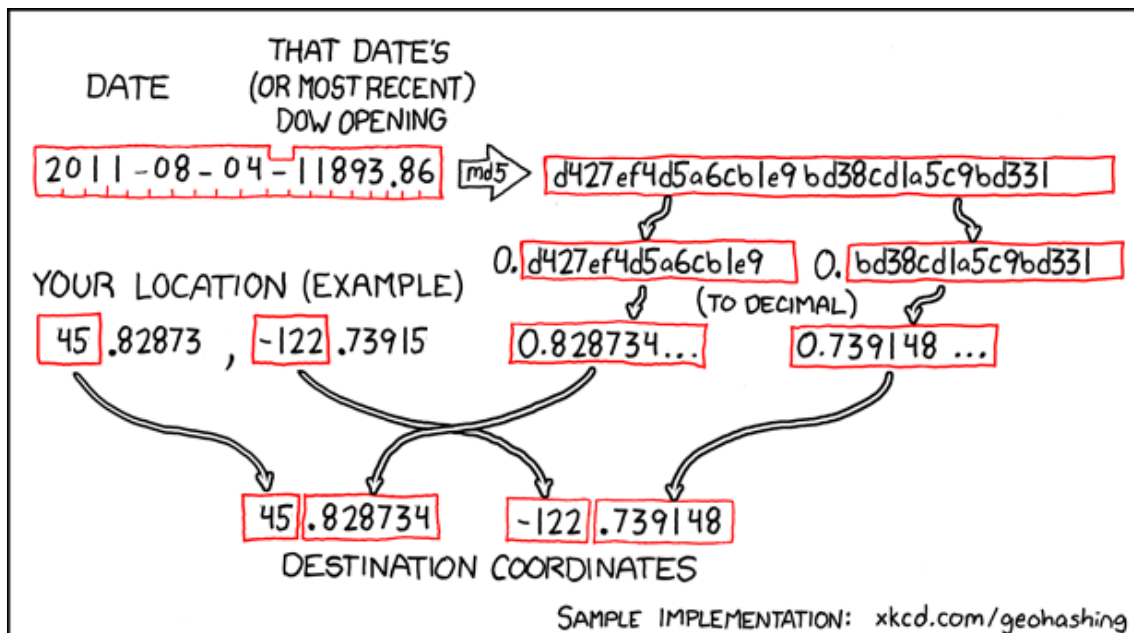
Geohash for 45, -122 on 2011-08-04

45.828734° N
122.739148° W

Portland, Oregon,
United States of
America



How this geohash location was calculated



Geohashing is an adventure game, first described in xkcd comic #426. Every day, effectively random locations are generated by an algorithm and people try to get there. To find out more, or join in the fun yourself, visit <http://geohashing.org/>

The place to talk about this particular expedition is at http://geohashing.org/2011-08-04_45_-122

