



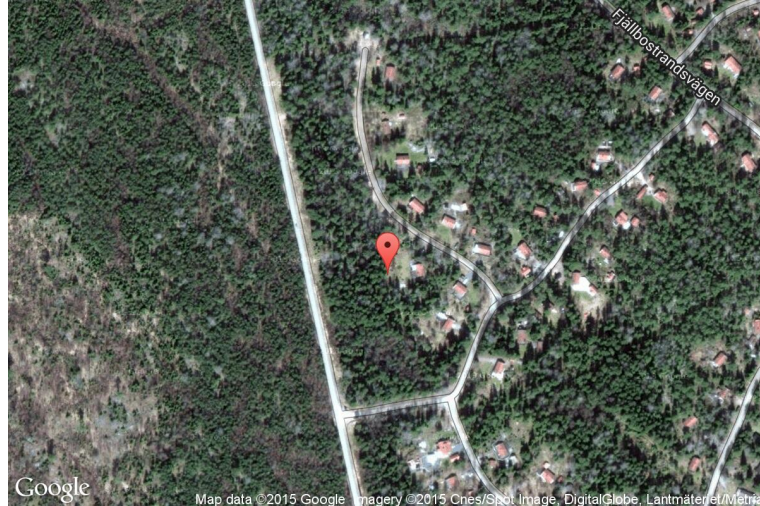
xkcd geohashing

The internet was here!

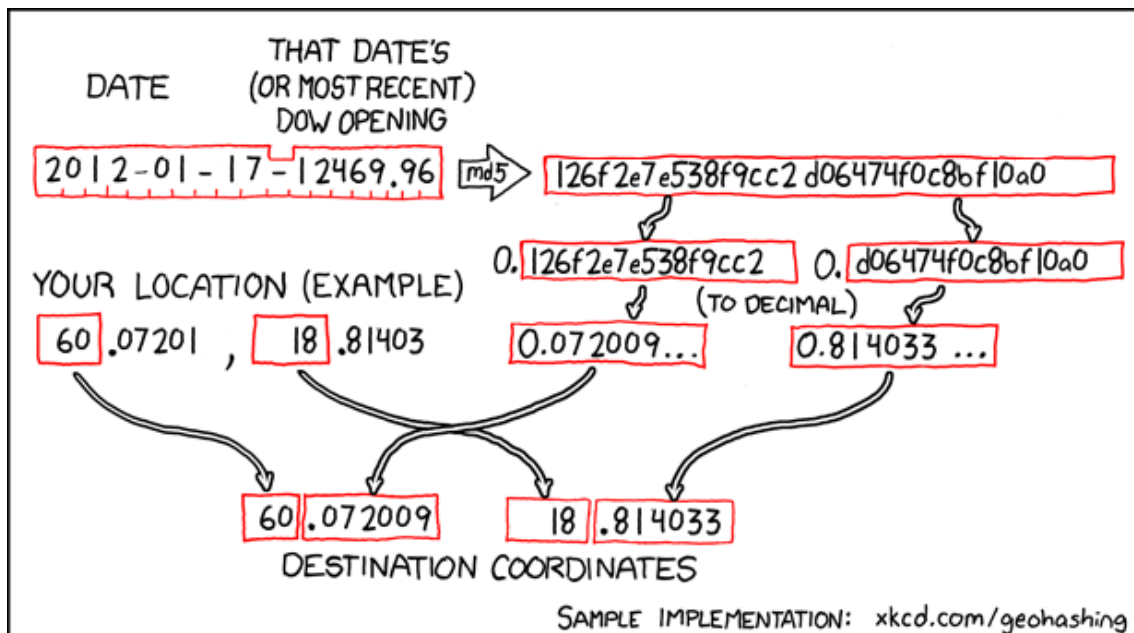
Geohash for 60, 18 on 2012-01-17

60.072009° N
18.814033° E

Stockholms län,
Sweden



How this geohash location was calculated



Geohashing is an adventure game, first described in xkcd comic #426. Every day, effectively random locations are generated by an algorithm and people try to get there. To find out more, or join in the fun yourself, visit <http://geohashing.org/>

The place to talk about this particular expedition is at http://geohashing.org/2012-01-17_60_18

