



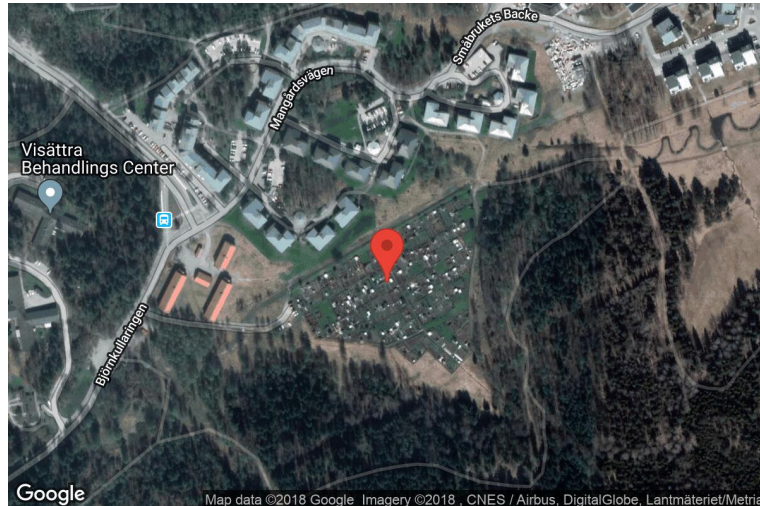
# xkcd geohashing

*The internet was here!*

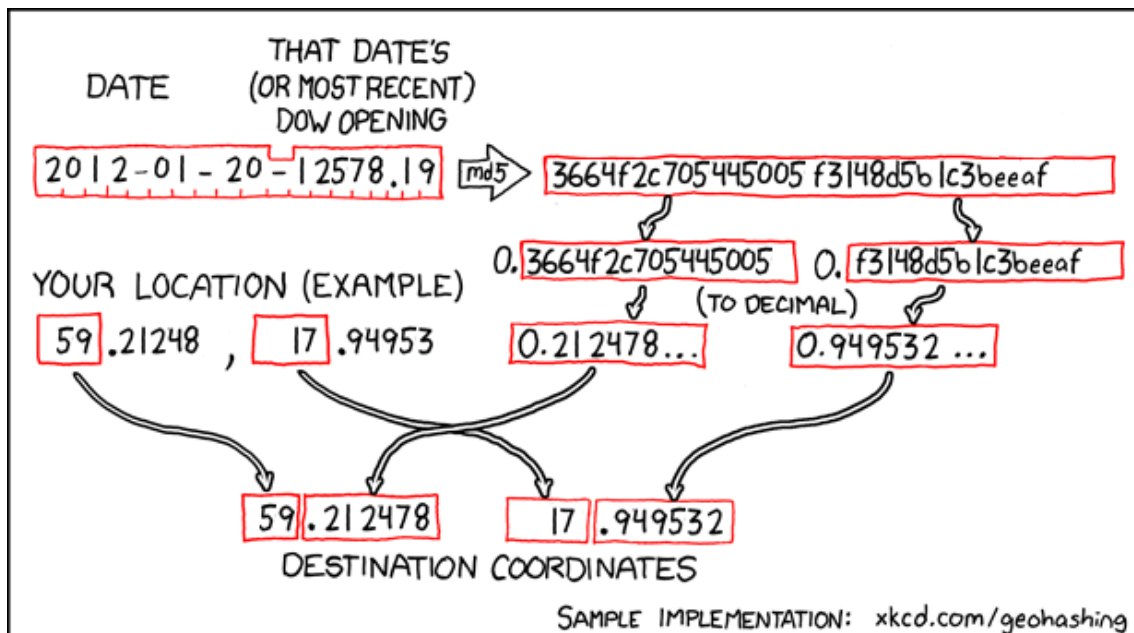
## Geohash for 59, 17 on 2012-01-20

59.212478° N  
17.949532° E

Huddinge,  
Stockholms län,  
Sweden



## How this geohash location was calculated



Geohashing is an adventure game, first described in xkcd comic #426. Every day, effectively random locations are generated by an algorithm and people try to get there. To find out more, or join in the fun yourself, visit <http://geohashing.org/>

The place to talk about this particular expedition is at [http://geohashing.org/2012-01-20\\_59\\_17](http://geohashing.org/2012-01-20_59_17)

