



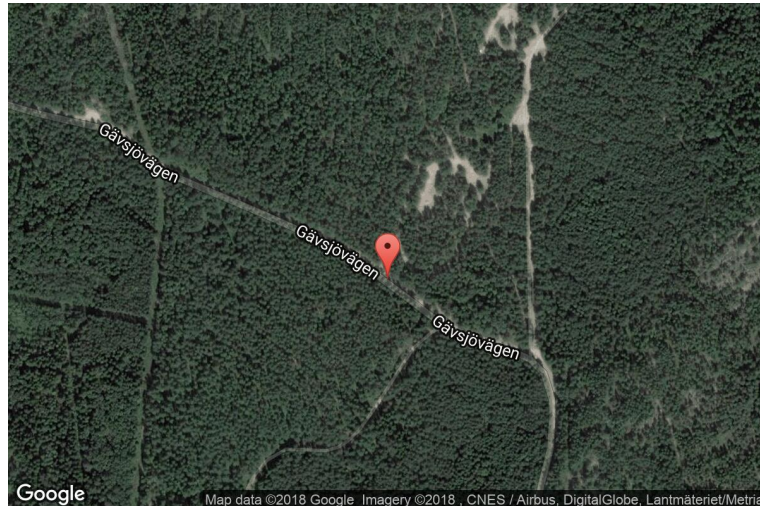
# xkcd geohashing

*The internet was here!*

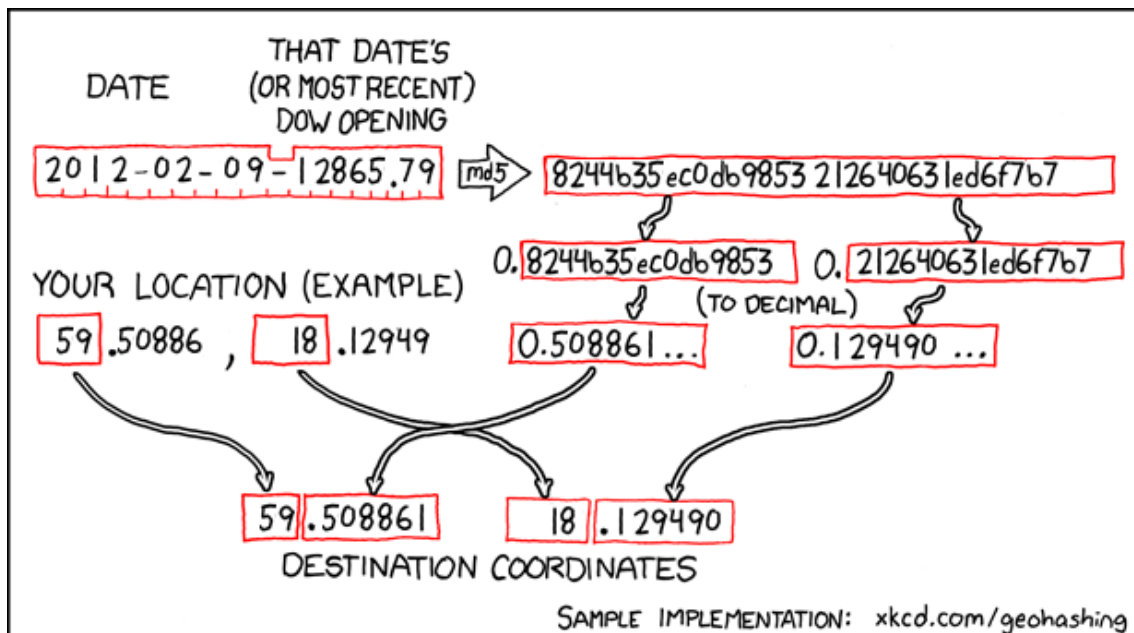
## Geohash for 59, 18 on 2012-02-09

59.508861° N  
18.12949° E

Stockholms län,  
Sweden



## How this geohash location was calculated



Geohashing is an adventure game, first described in xkcd comic #426. Every day, effectively random locations are generated by an algorithm and people try to get there. To find out more, or join in the fun yourself, visit <http://geohashing.org/>

The place to talk about this particular expedition is at [http://geohashing.org/2012-02-09\\_59\\_18](http://geohashing.org/2012-02-09_59_18)

