



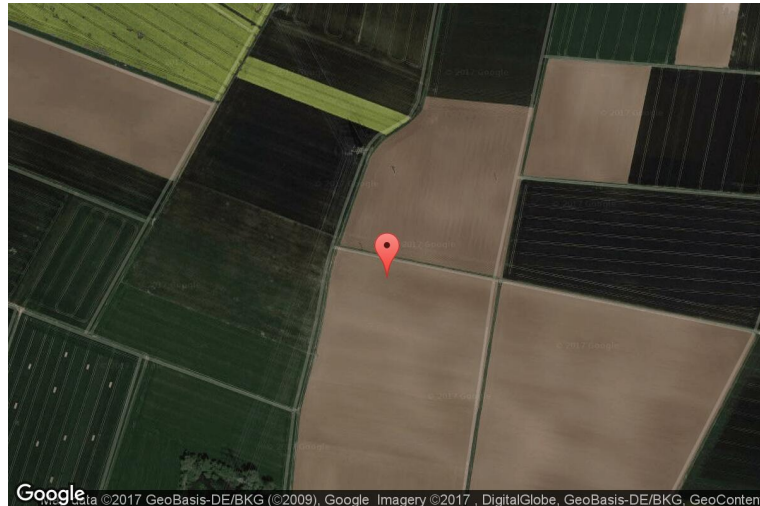
# xkcd geohashing

*The internet was here!*

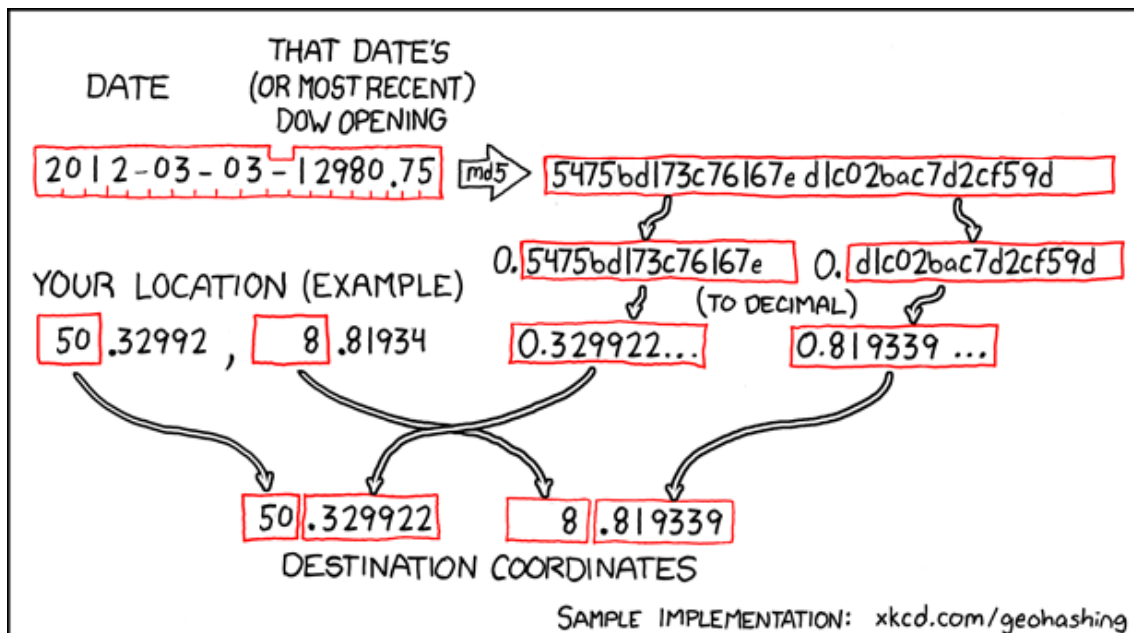
## Geohash for 50, 8 on 2012-03-03

50.329922° N  
8.819339° E

Reichelsheim  
(Wetterau), Hessen,  
Germany



## How this geohash location was calculated



Geohashing is an adventure game, first described in xkcd comic #426. Every day, effectively random locations are generated by an algorithm and people try to get there. To find out more, or join in the fun yourself, visit <http://geohashing.org/>

The place to talk about this particular expedition is at [http://geohashing.org/2012-03-03\\_50\\_8](http://geohashing.org/2012-03-03_50_8)

