

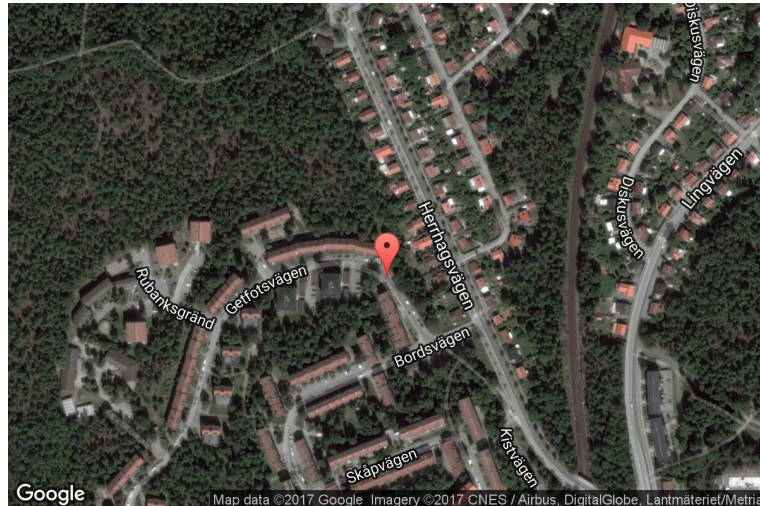
# xkcd geohashing

*The internet was here!*

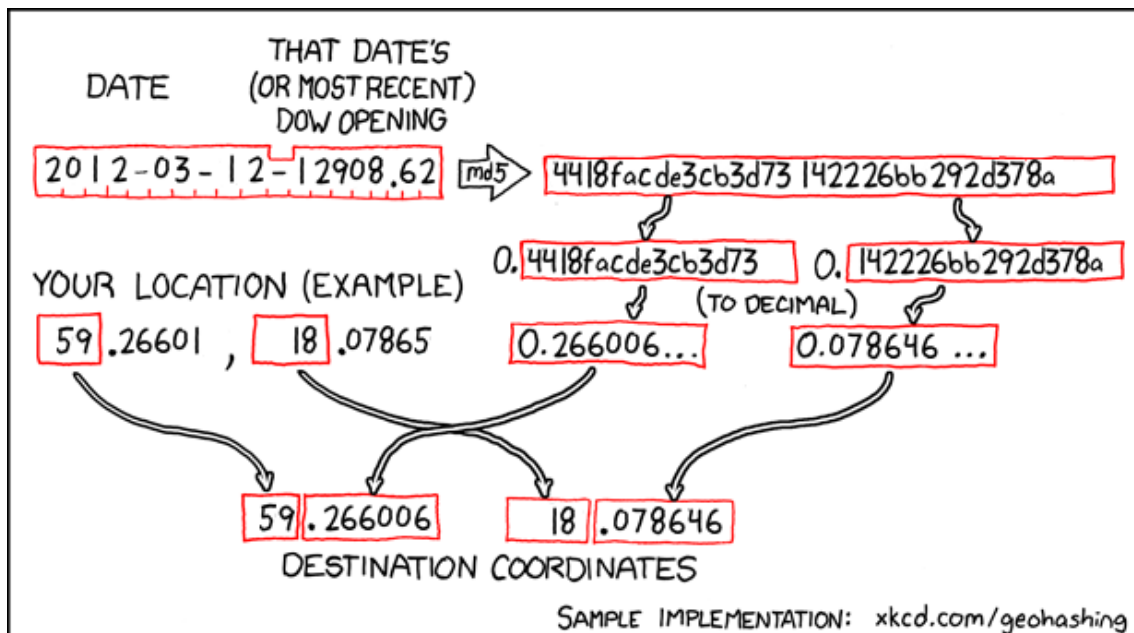
## Geohash for 59, 18 on 2012-03-12

59.266006° N  
18.078646° E

Stockholm,  
Stockholms län,  
Sweden



## How this geohash location was calculated



Geohashing is an adventure game, first described in xkcd comic #426. Every day, effectively random locations are generated by an algorithm and people try to get there. To find out more, or join in the fun yourself, visit <http://geohashing.org/>

The place to talk about this particular expedition is at [http://geohashing.org/2012-03-12\\_59\\_18](http://geohashing.org/2012-03-12_59_18)

