



xkcd geohashing

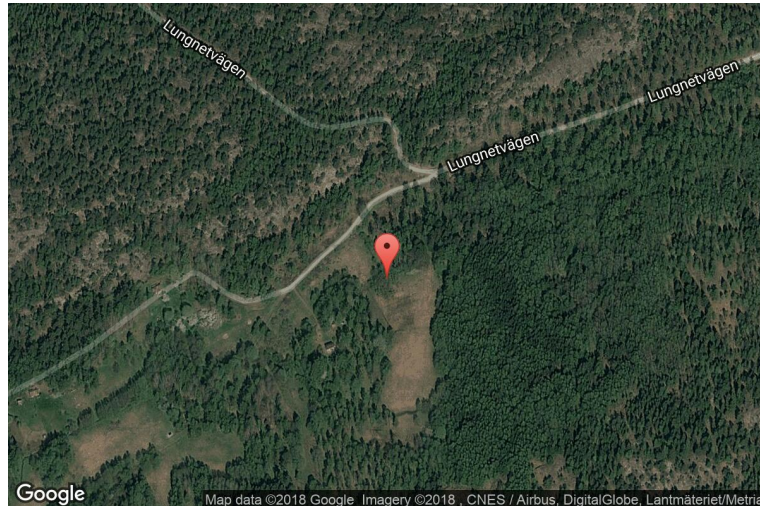
The internet was here!

Geohash for 58, 18 on 2012-03-17

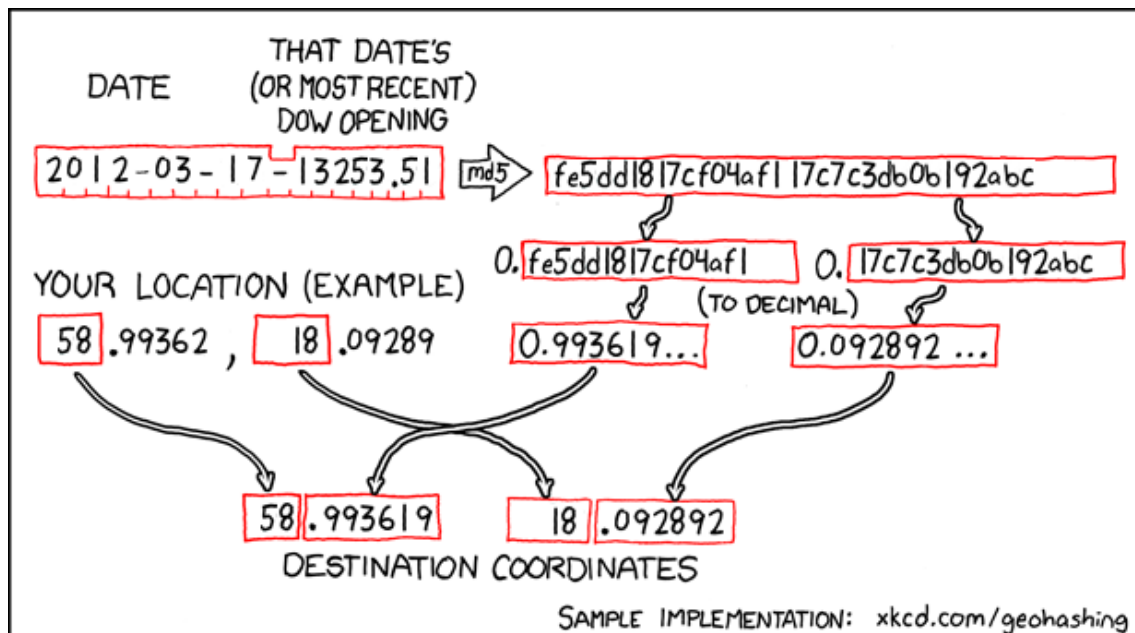
58.993619° N

18.092892° E

Stockholm County,
Sweden



How this geohash location was calculated



Geohashing is an adventure game, first described in xkcd comic #426. Every day, effectively random locations are generated by an algorithm and people try to get there. To find out more, or join in the fun yourself, visit <http://geohashing.org/>

The place to talk about this particular expedition is at http://geohashing.org/2012-03-17_58_18

