



xkcd geohashing

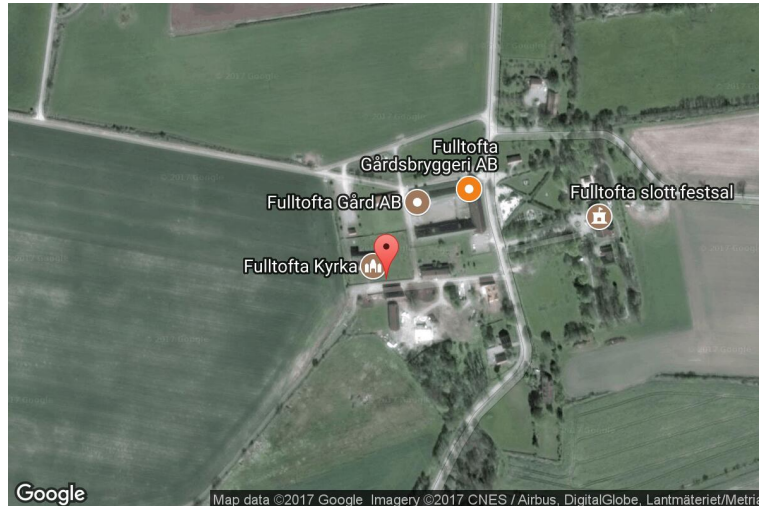
The internet was here!

Geohash for 55, 13 on 2012-05-02

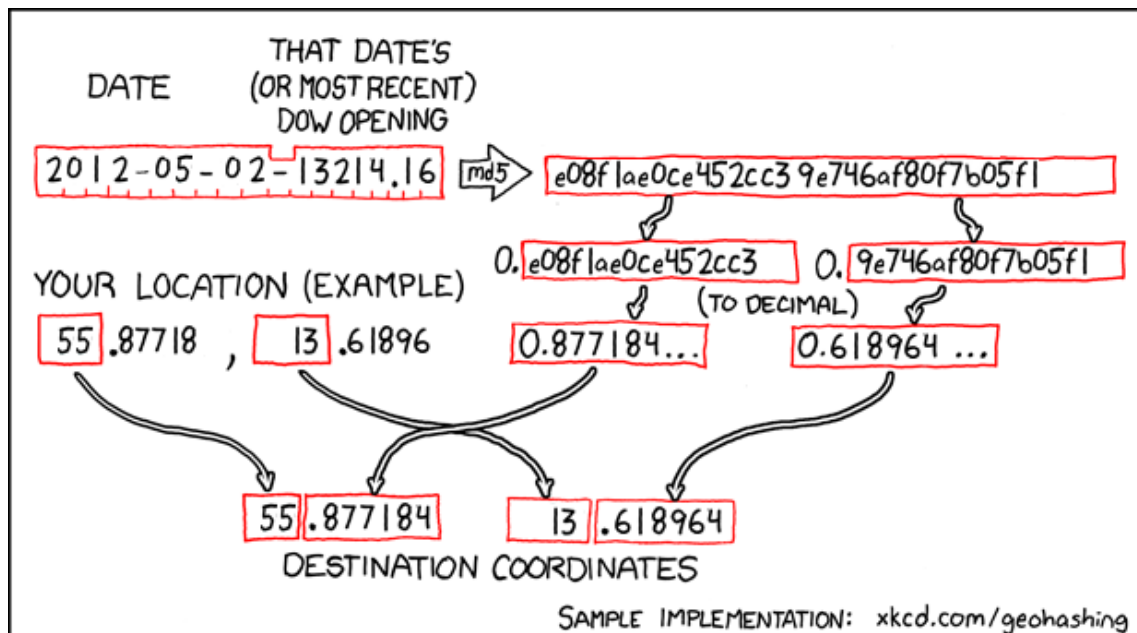
55.877184° N

13.618964° E

Fulltofta, Skåne län,
Sweden



How this geohash location was calculated



Geohashing is an adventure game, first described in xkcd comic #426. Every day, effectively random locations are generated by an algorithm and people try to get there. To find out more, or join in the fun yourself, visit <http://geohashing.org/>

The place to talk about this particular expedition is at http://geohashing.org/2012-05-02_55_13

