



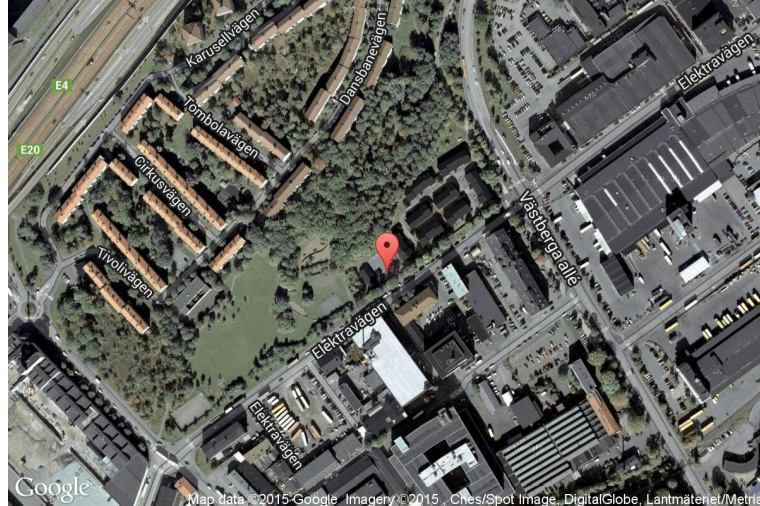
xkcd geohashing

The internet was here!

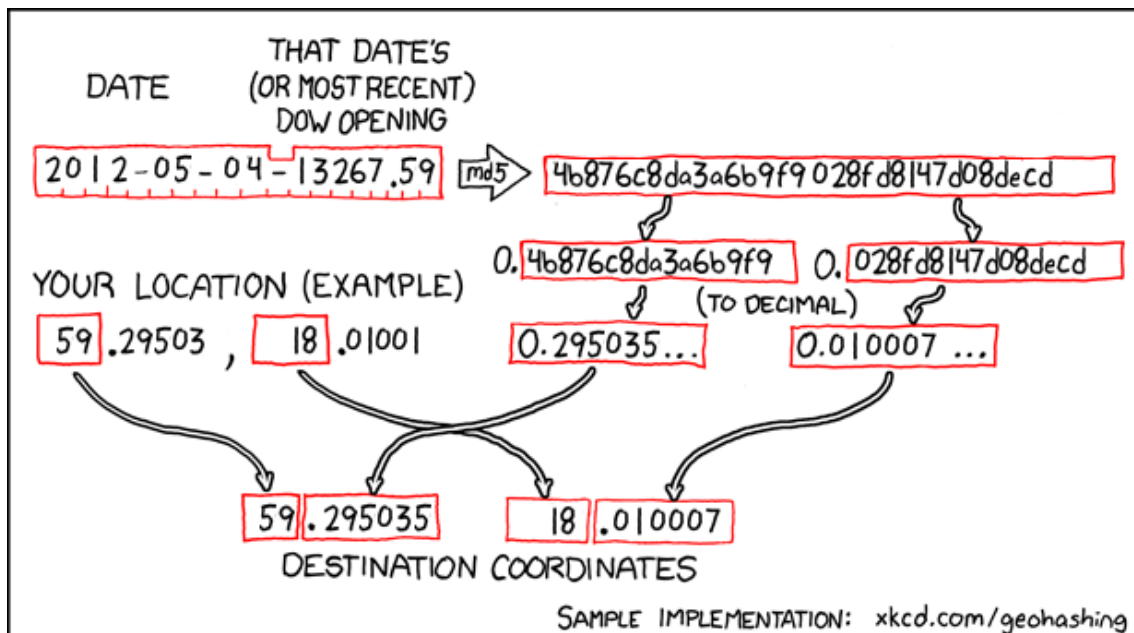
Geohash for 59, 18 on 2012-05-04

59.295035° N
18.010007° E

Stockholm,
Stockholms län,
Sweden



How this geohash location was calculated



Geohashing is an adventure game, first described in xkcd comic #426. Every day, effectively random locations are generated by an algorithm and people try to get there. To find out more, or join in the fun yourself, visit <http://geohashing.org/>

The place to talk about this particular expedition is at http://geohashing.org/2012-05-04_59_18

