



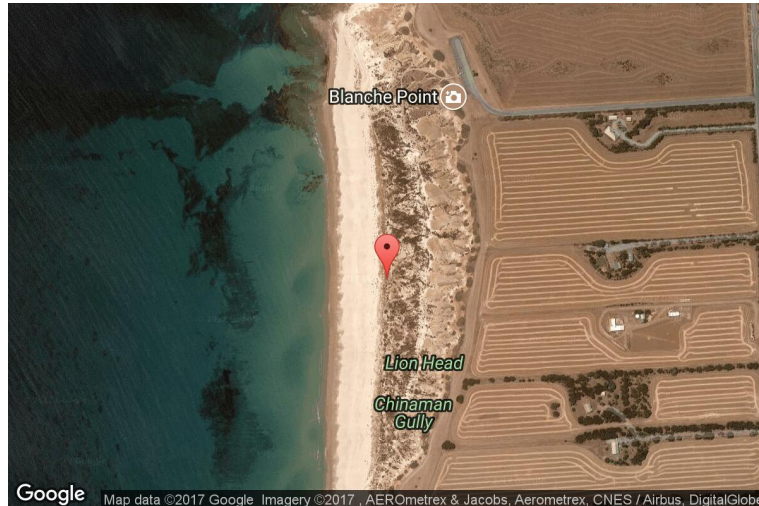
xkcd geohashing

The internet was here!

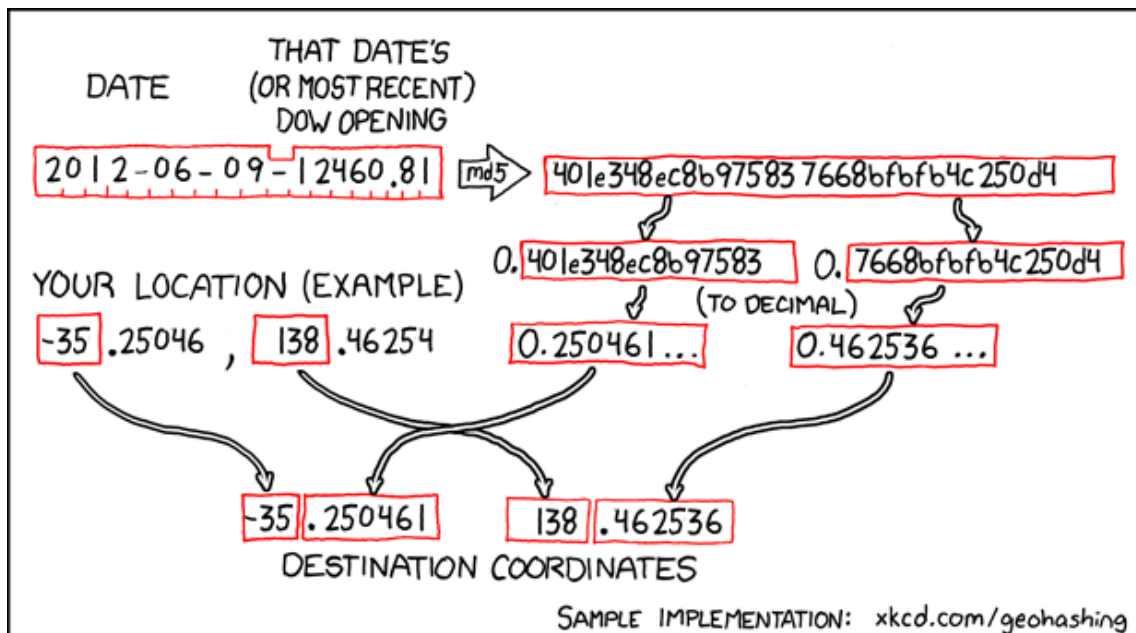
Geohash for -35, 138 on 2012-06-09

35.250461° S
138.462536° E

Port Willunga, South
Australia, Australia



How this geohash location was calculated



Geohashing is an adventure game, first described in xkcd comic #426. Every day, effectively random locations are generated by an algorithm and people try to get there. To find out more, or join in the fun yourself, visit <http://geohashing.org/>

The place to talk about this particular expedition is at http://geohashing.org/2012-06-09_-35_138

