



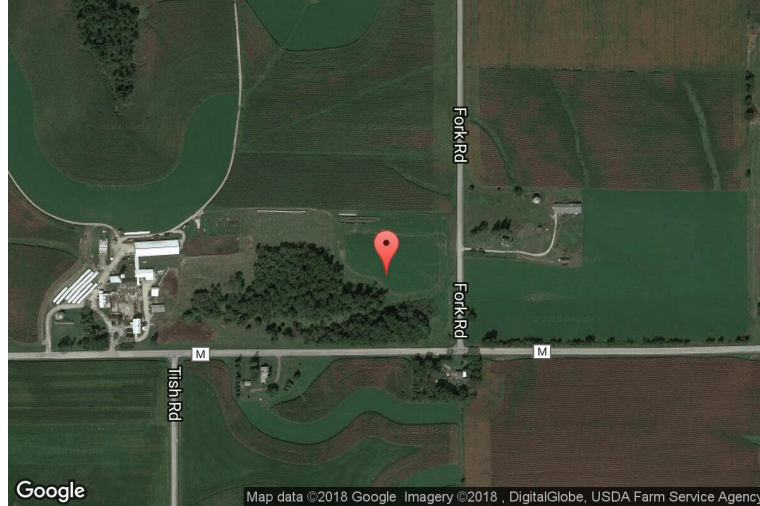
xkcd geohashing

The internet was here!

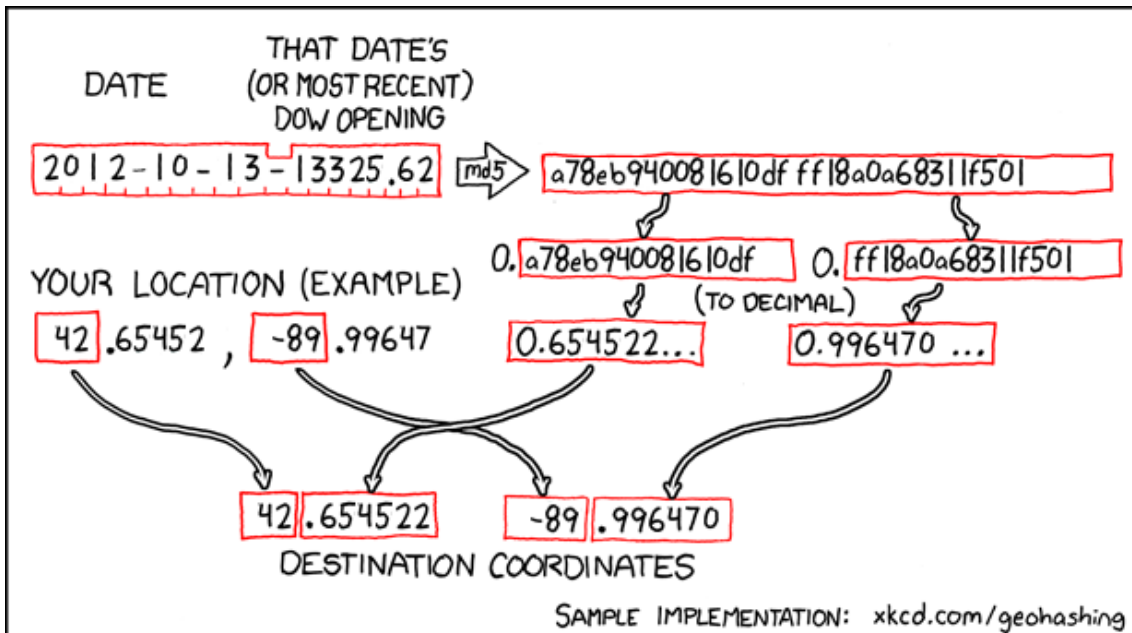
Geohash for 42, -89 on 2012-10-13

42.654522° N
89.99647° W

Darlington,
Wisconsin, United
States



How this geohash location was calculated



Geohashing is an adventure game, first described in xkcd comic #426. Every day, effectively random locations are generated by an algorithm and people try to get there. To find out more, or join in the fun yourself, visit <http://geohashing.org/>

The place to talk about this particular expedition is at http://geohashing.org/2012-10-13_42_-89

