



xkcd geohashing

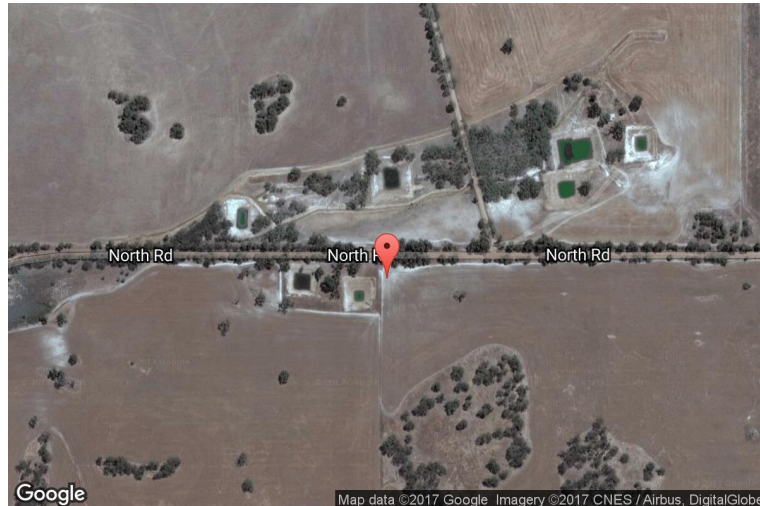
The internet was here!

Geohash for -31, 116 on 2013-07-11

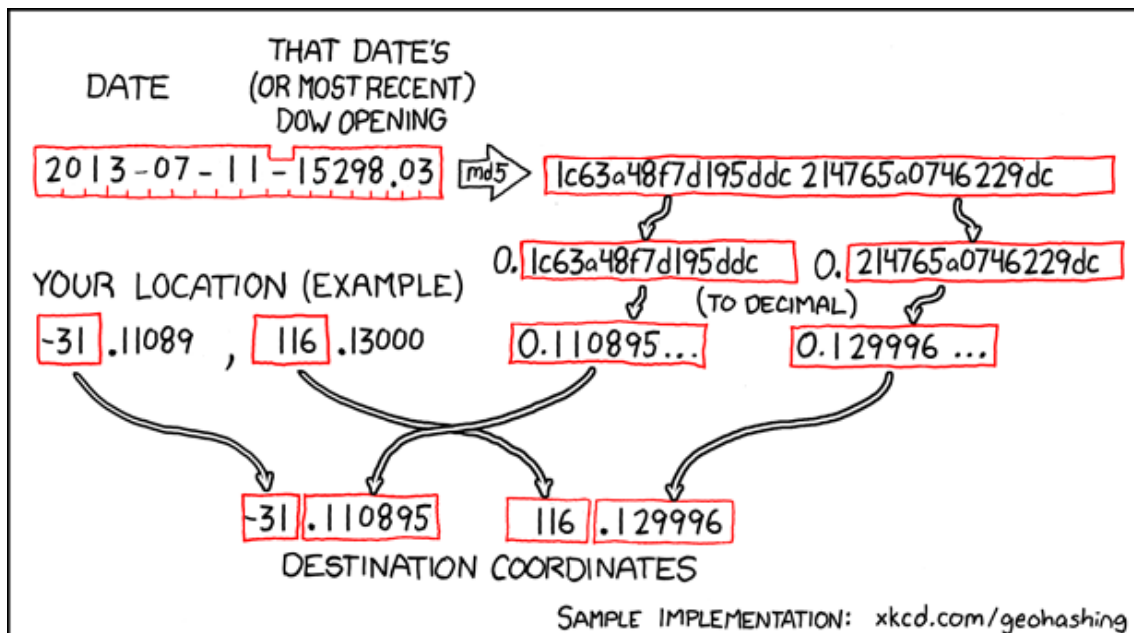
31.110895° S

116.129996° E

Wannamal, Western
Australia, Australia



How this geohash location was calculated



Geohashing is an adventure game, first described in xkcd comic #426. Every day, effectively random locations are generated by an algorithm and people try to get there. To find out more, or join in the fun yourself, visit <http://geohashing.org/>

The place to talk about this particular expedition is at http://geohashing.org/2013-07-11_-31_116

