



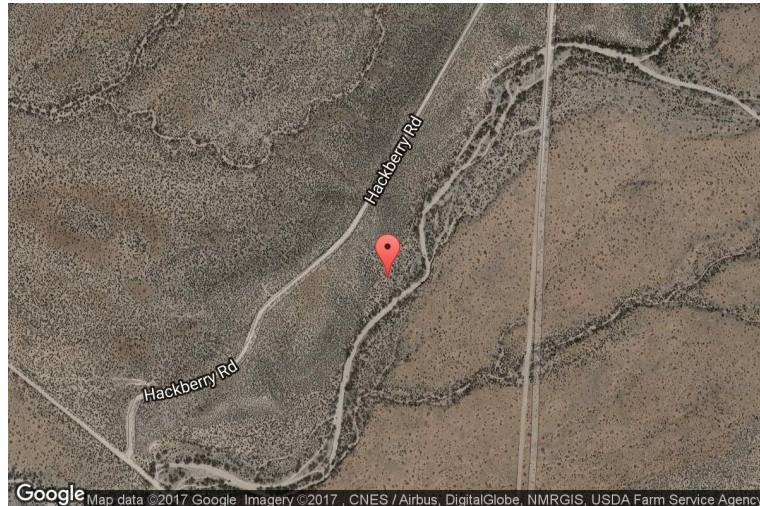
# xkcd geohashing

*The internet was here!*

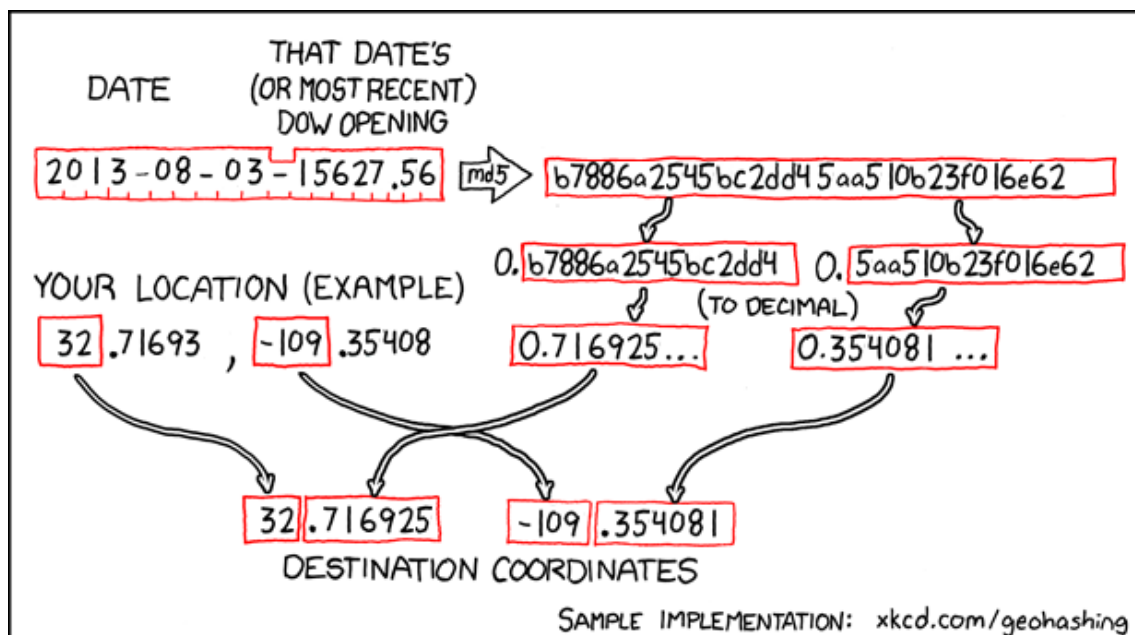
## Geohash for 32, -109 on 2013-08-03

32.716925° N  
109.354081° W

Safford, Arizona,  
United States



## How this geohash location was calculated



Geohashing is an adventure game, first described in xkcd comic #426. Every day, effectively random locations are generated by an algorithm and people try to get there. To find out more, or join in the fun yourself, visit <http://geohashing.org/>

The place to talk about this particular expedition is at [http://geohashing.org/2013-08-03\\_32\\_-109](http://geohashing.org/2013-08-03_32_-109)

