



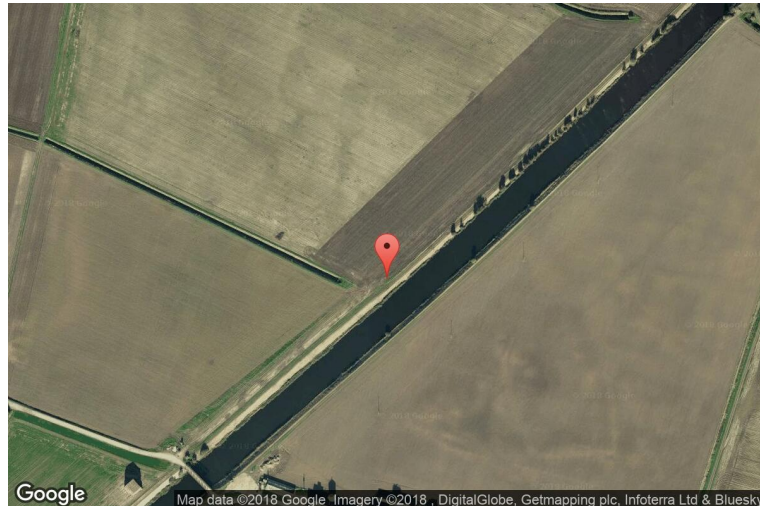
# xkcd geohashing

*The internet was here!*

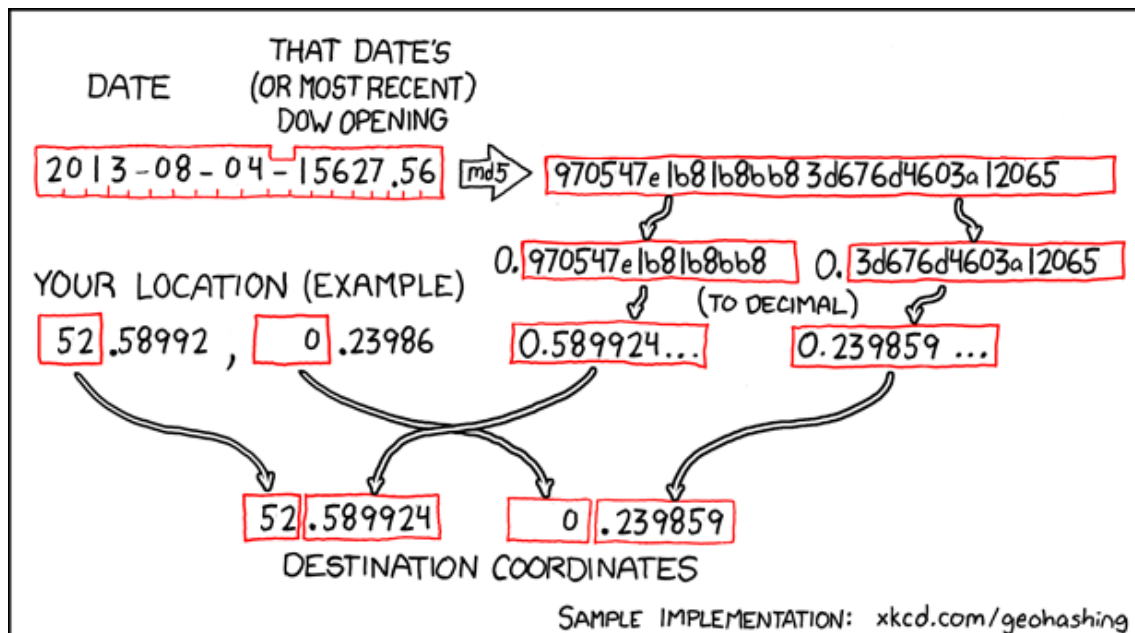
## Geohash for 52, 0 on 2013-08-04

52.589924° N  
0.239859° E

King's Lynn and  
West Norfolk,  
England, United  
Kingdom



## How this geohash location was calculated



Geohashing is an adventure game, first described in xkcd comic #426. Every day, effectively random locations are generated by an algorithm and people try to get there. To find out more, or join in the fun yourself, visit <http://geohashing.org/>

The place to talk about this particular expedition is at [http://geohashing.org/2013-08-04\\_52\\_0](http://geohashing.org/2013-08-04_52_0)

