



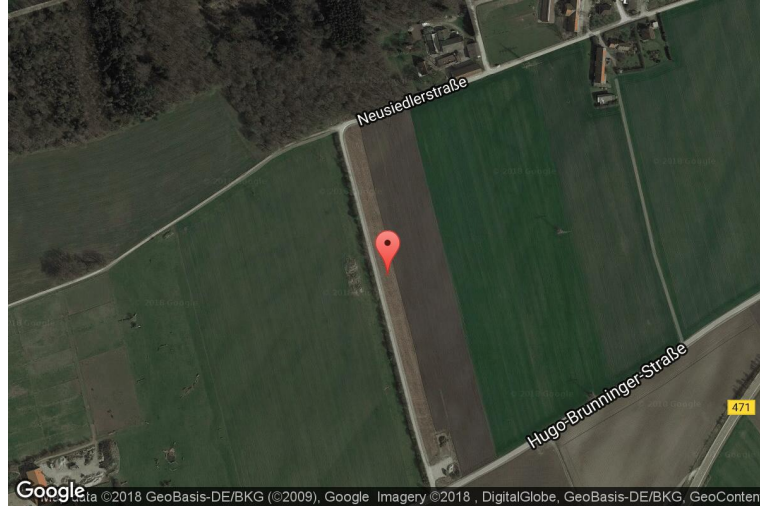
# xkcd geohashing

*The internet was here!*

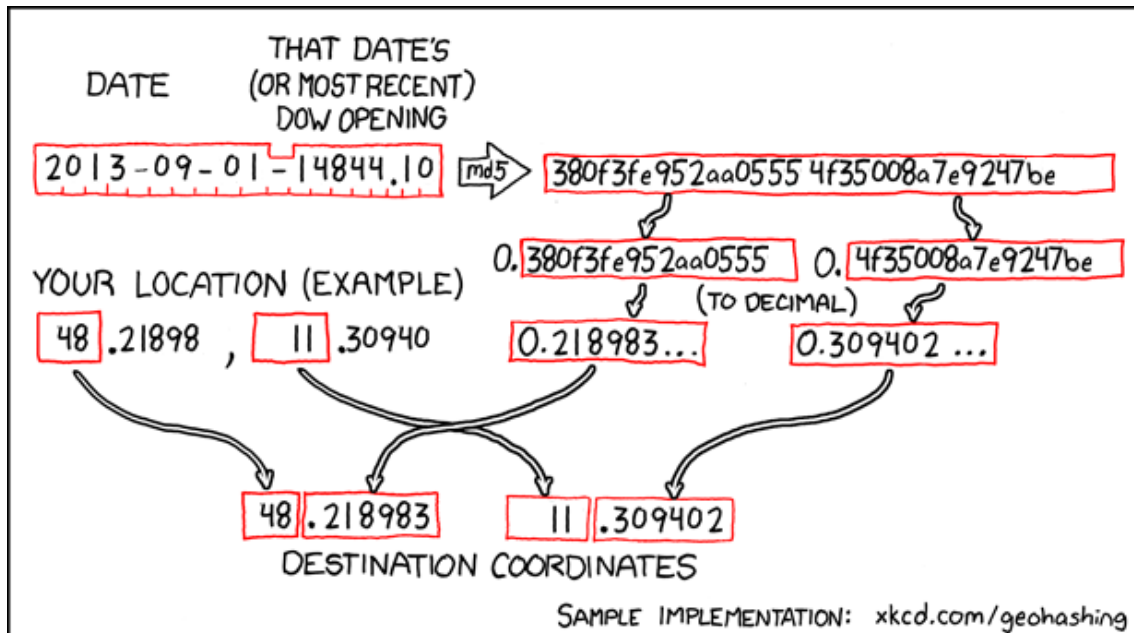
## Geohash for 48, 11 on 2013-09-01

48.218983° N  
11.309402° E

Bavaria, Germany



## How this geohash location was calculated



Geohashing is an adventure game, first described in xkcd comic #426. Every day, effectively random locations are generated by an algorithm and people try to get there. To find out more, or join in the fun yourself, visit <http://geohashing.org/>

The place to talk about this particular expedition is at [http://geohashing.org/2013-09-01\\_48\\_11](http://geohashing.org/2013-09-01_48_11)

