



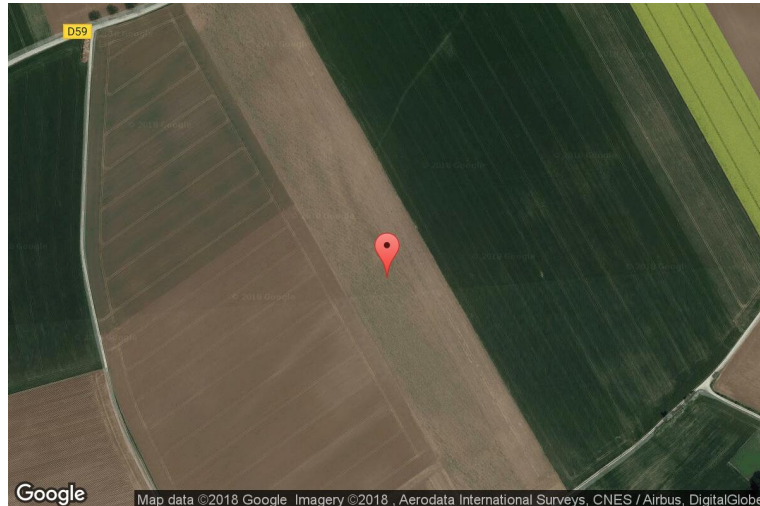
# xkcd geohashing

*The internet was here!*

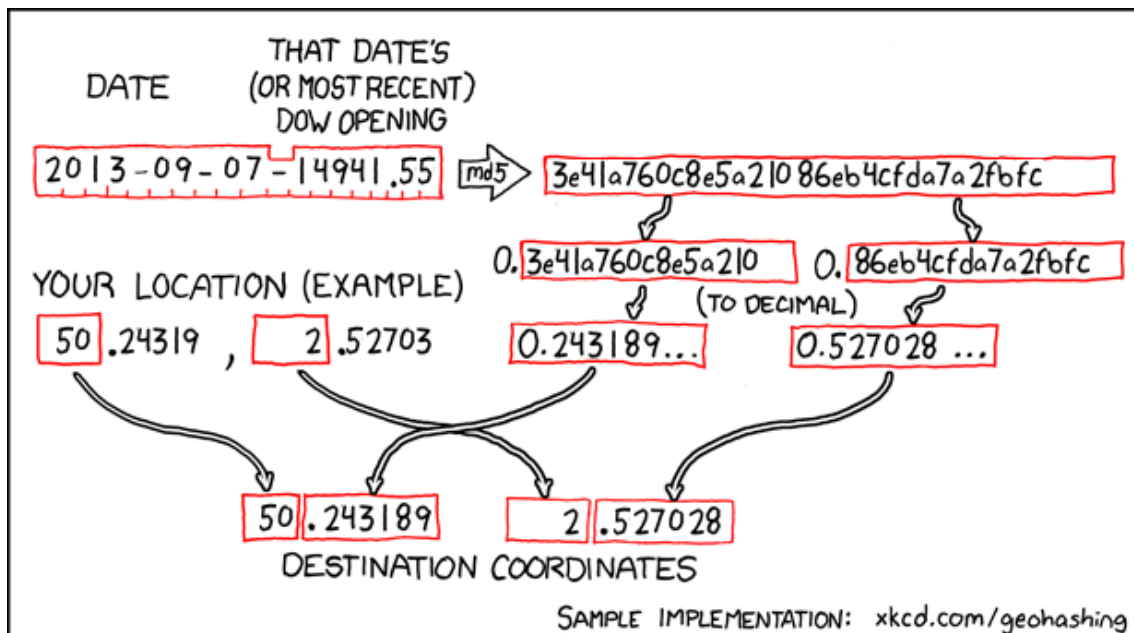
## Geohash for 50, 2 on 2013-09-07

50.243189° N  
2.527028° E

Barly, Nord-Pas-de-Calais and Picardy, France



## How this geohash location was calculated



Geohashing is an adventure game, first described in xkcd comic #426. Every day, effectively random locations are generated by an algorithm and people try to get there. To find out more, or join in the fun yourself, visit <http://geohashing.org/>

The place to talk about this particular expedition is at [http://geohashing.org/2013-09-07\\_50\\_2](http://geohashing.org/2013-09-07_50_2)

