



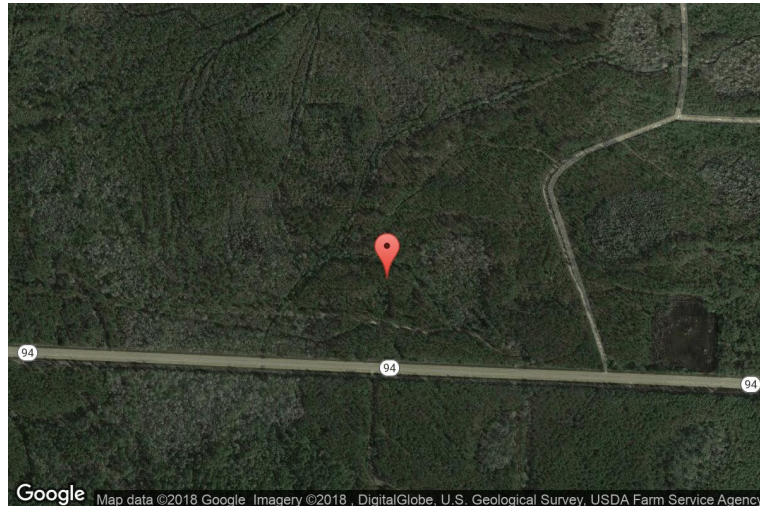
xkcd geohashing

The internet was here!

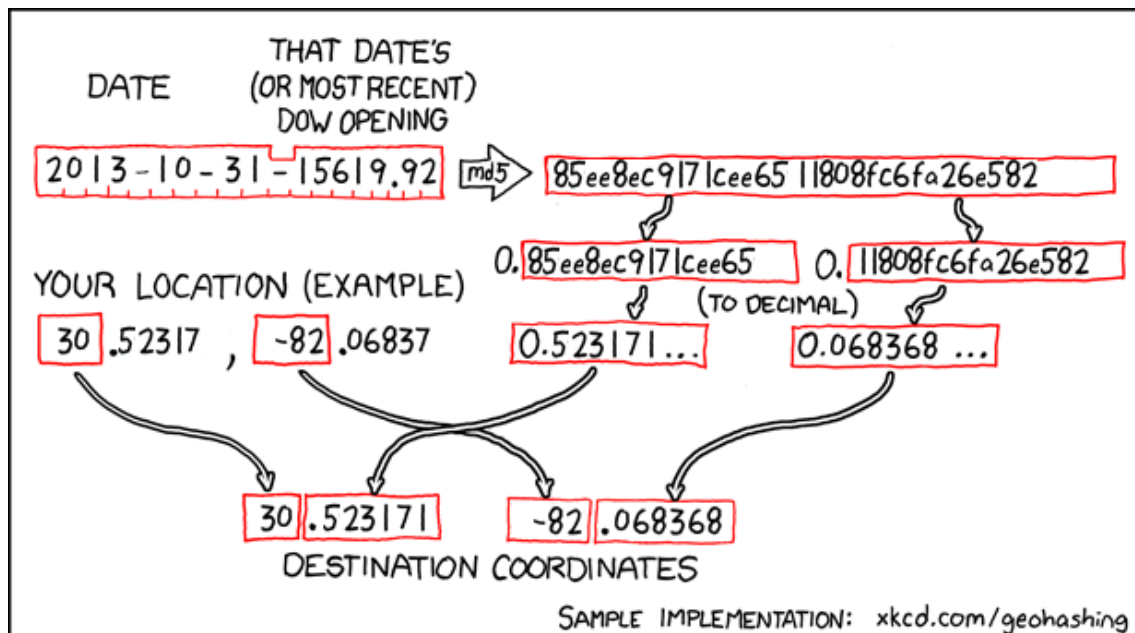
Geohash for 30, -82 on 2013-10-31

30.523171° N
82.068368° W

Saint George,
Georgia, United
States



How this geohash location was calculated



Geohashing is an adventure game, first described in xkcd comic #426. Every day, effectively random locations are generated by an algorithm and people try to get there. To find out more, or join in the fun yourself, visit <http://geohashing.org/>

The place to talk about this particular expedition is at http://geohashing.org/2013-10-31_30_-82

