



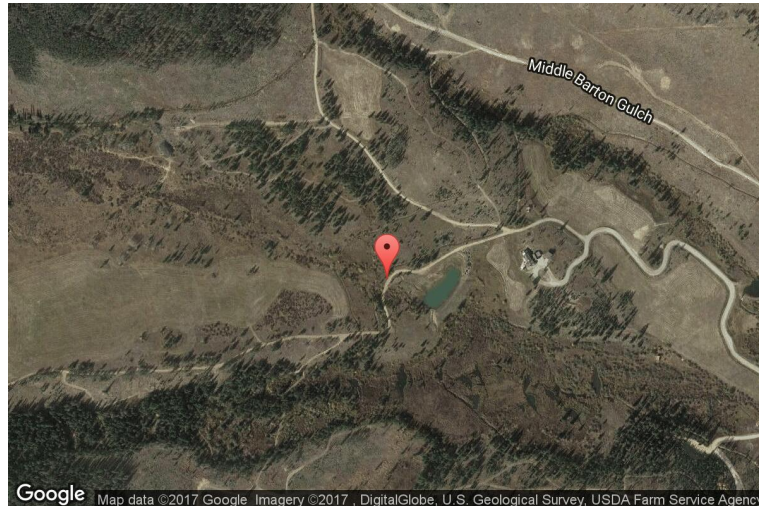
# xkcd geohashing

*The internet was here!*

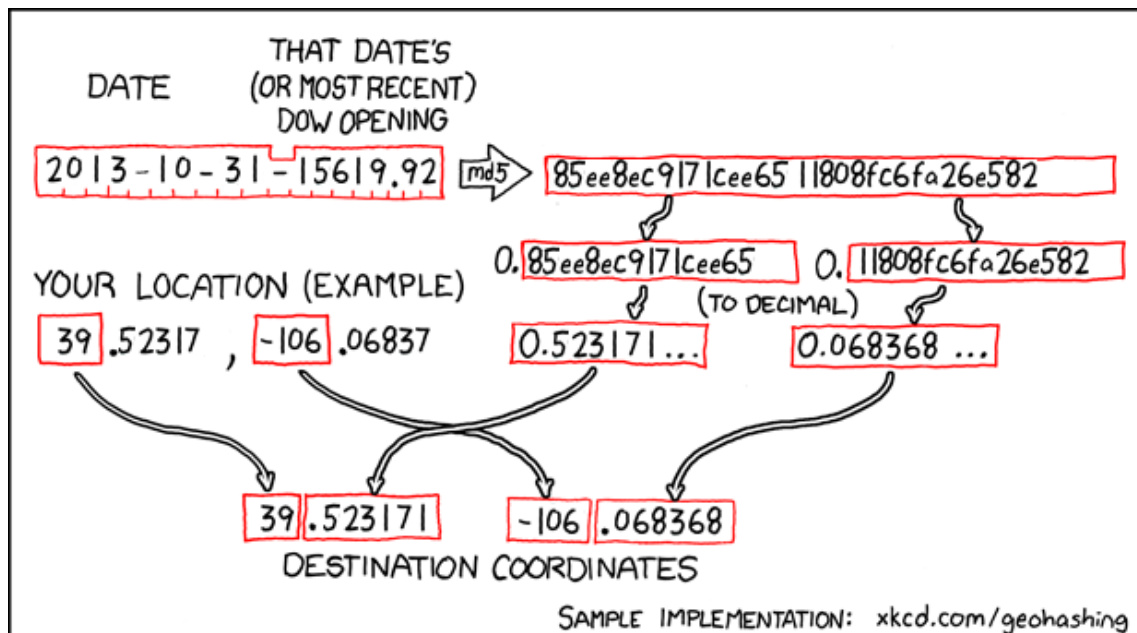
## Geohash for 39, -106 on 2013-10-31

39.523171° N  
106.068368° W

Silverthorne,  
Colorado, United  
States



## How this geohash location was calculated



Geohashing is an adventure game, first described in xkcd comic #426. Every day, effectively random locations are generated by an algorithm and people try to get there. To find out more, or join in the fun yourself, visit <http://geohashing.org/>

The place to talk about this particular expedition is at [http://geohashing.org/2013-10-31\\_39\\_-106](http://geohashing.org/2013-10-31_39_-106)

