



xkcd geohashing

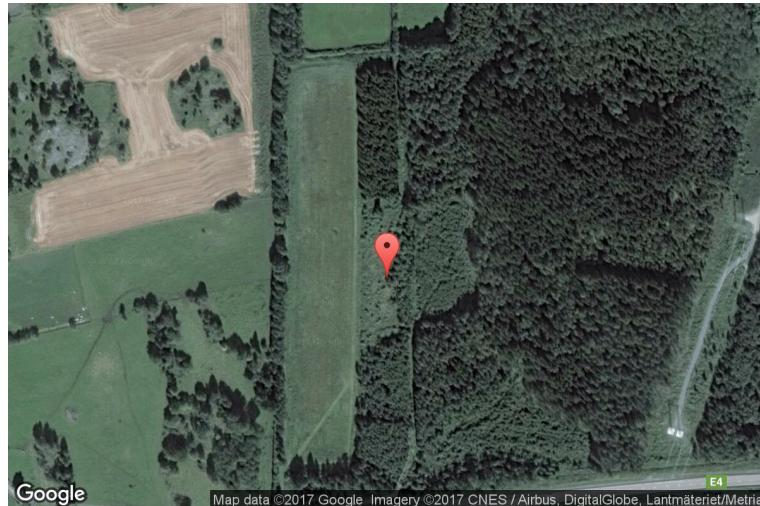
The internet was here!

Geohash for 58, 14 on 2013-10-31

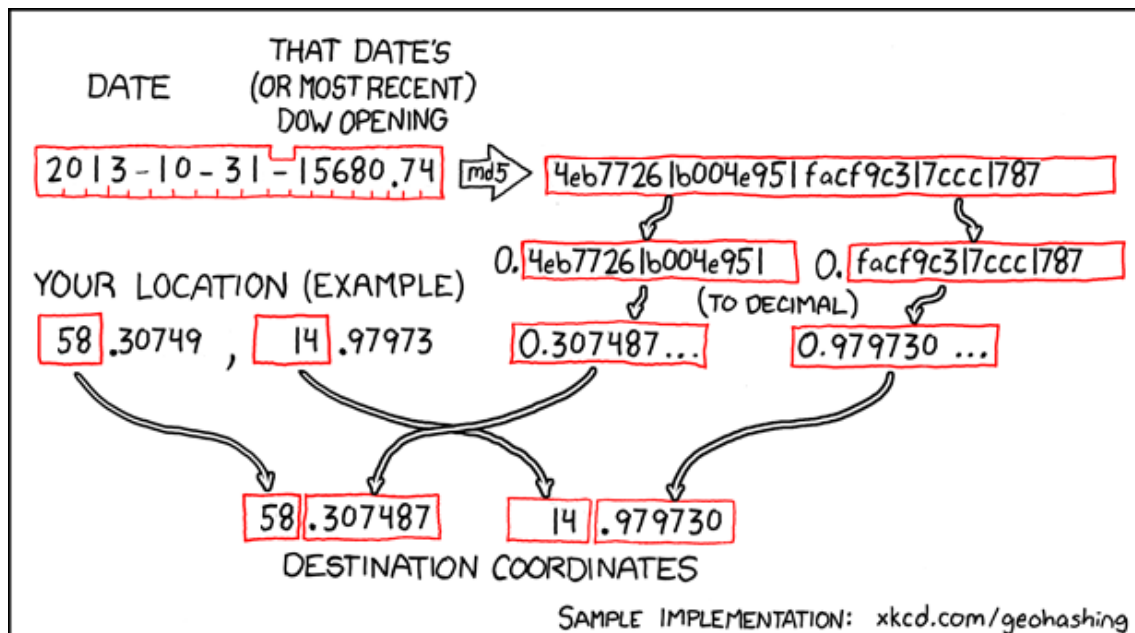
58.307487° N

14.97973° E

Östergötlands län,
Sweden



How this geohash location was calculated



Geohashing is an adventure game, first described in xkcd comic #426. Every day, effectively random locations are generated by an algorithm and people try to get there. To find out more, or join in the fun yourself, visit <http://geohashing.org/>

The place to talk about this particular expedition is at http://geohashing.org/2013-10-31_58_14

