



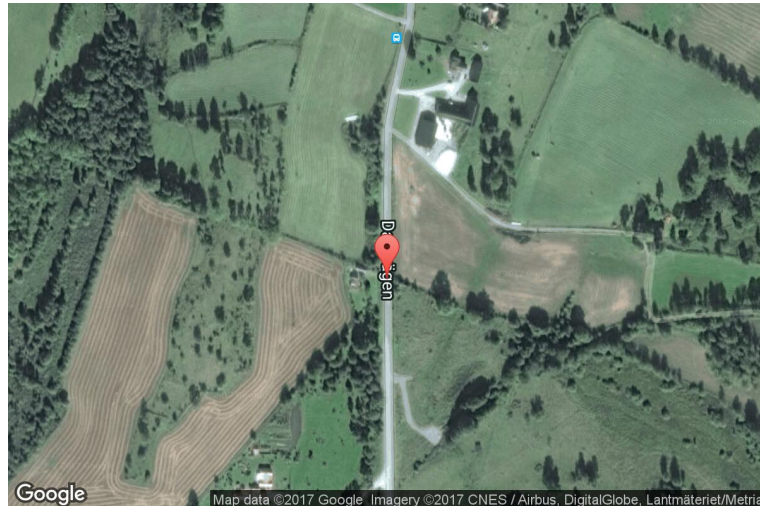
xkcd geohashing

The internet was here!

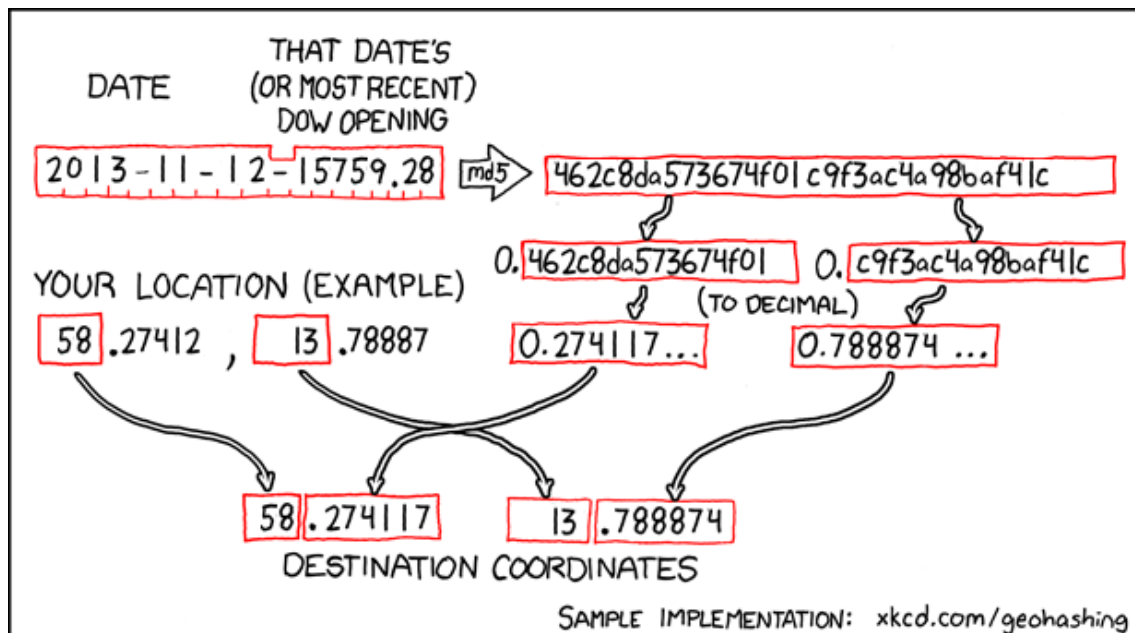
Geohash for 58, 13 on 2013-11-12

58.274117° N
13.788874° E

Västra Götalands
län, Sweden



How this geohash location was calculated



Geohashing is an adventure game, first described in xkcd comic #426. Every day, effectively random locations are generated by an algorithm and people try to get there. To find out more, or join in the fun yourself, visit <http://geohashing.org/>

The place to talk about this particular expedition is at http://geohashing.org/2013-11-12_58_13

