



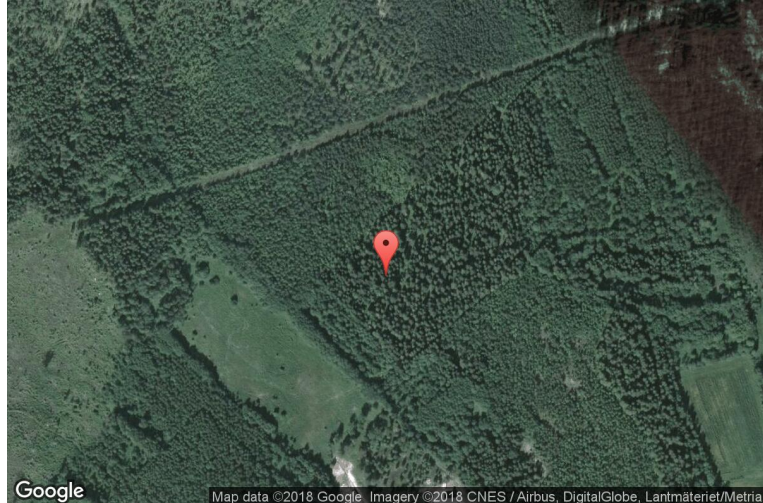
xkcd geohashing

The internet was here!

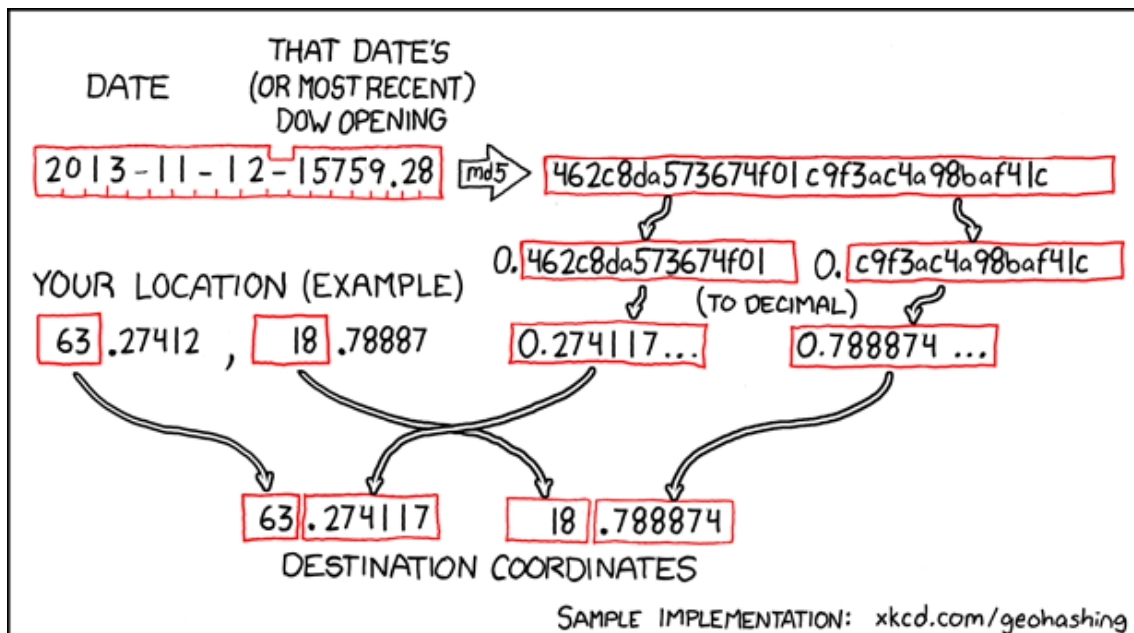
Geohash for 63, 18 on 2013-11-12

63.274117° N
18.788874° E

Arnäs District,
Västernorrlands län,
Sweden



How this geohash location was calculated



Geohashing is an adventure game, first described in xkcd comic #426. Every day, effectively random locations are generated by an algorithm and people try to get there. To find out more, or join in the fun yourself, visit <http://geohashing.org/>

The place to talk about this particular expedition is at http://geohashing.org/2013-11-12_63_18

