



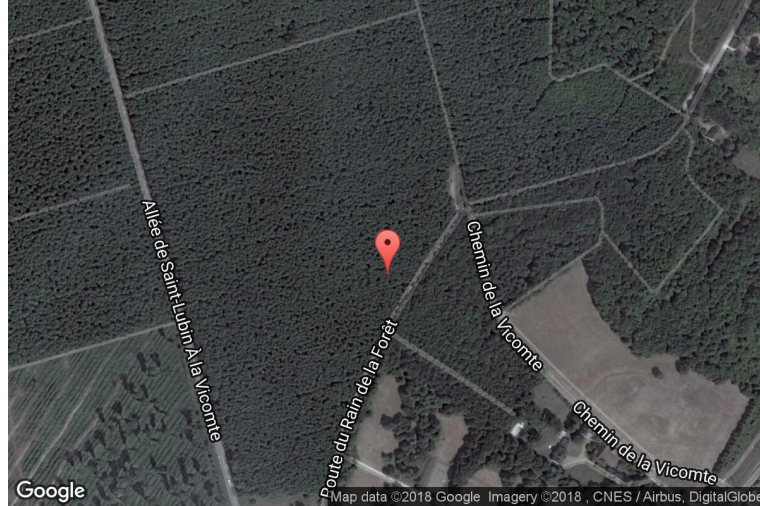
xkcd geohashing

The internet was here!

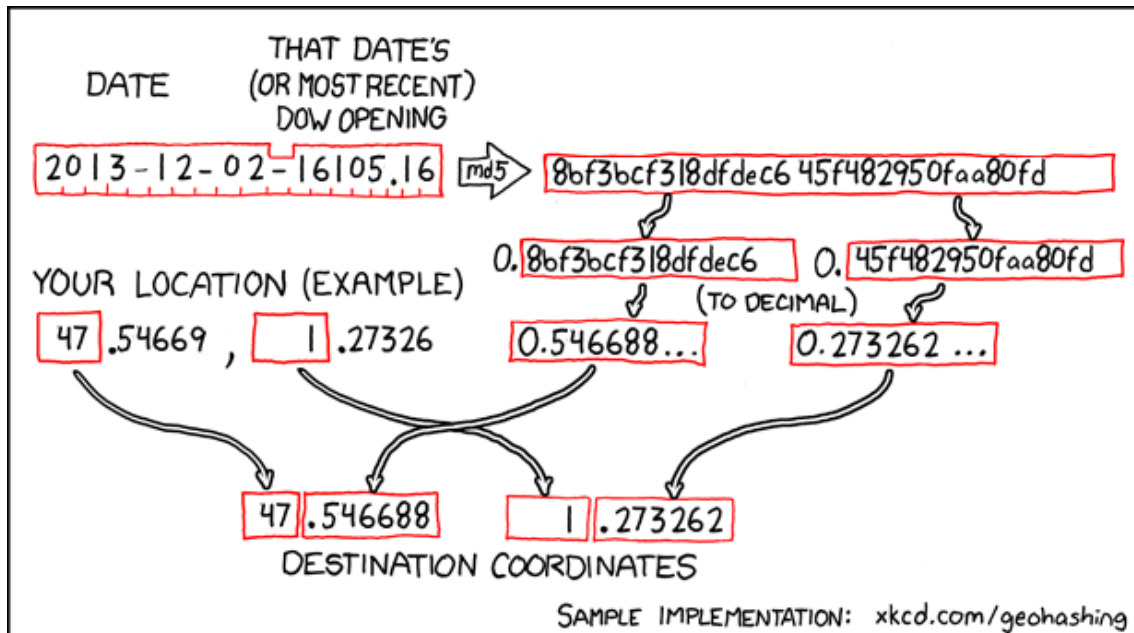
Geohash for 47, 1 on 2013-12-02

47.546688° N
1.273262° E

Valloire-sur-Cisse,
Centre-Loire Valley,
France



How this geohash location was calculated



Geohashing is an adventure game, first described in xkcd comic #426. Every day, effectively random locations are generated by an algorithm and people try to get there. To find out more, or join in the fun yourself, visit <http://geohashing.org/>

The place to talk about this particular expedition is at http://geohashing.org/2013-12-02_47_1

