



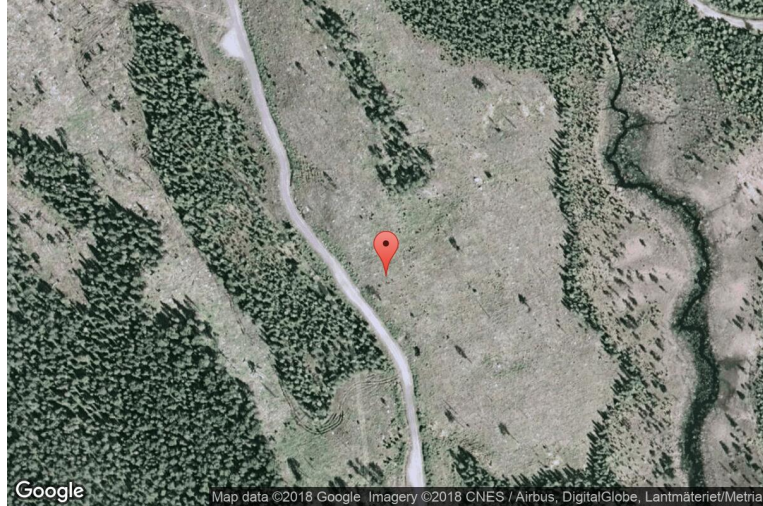
xkcd geohashing

The internet was here!

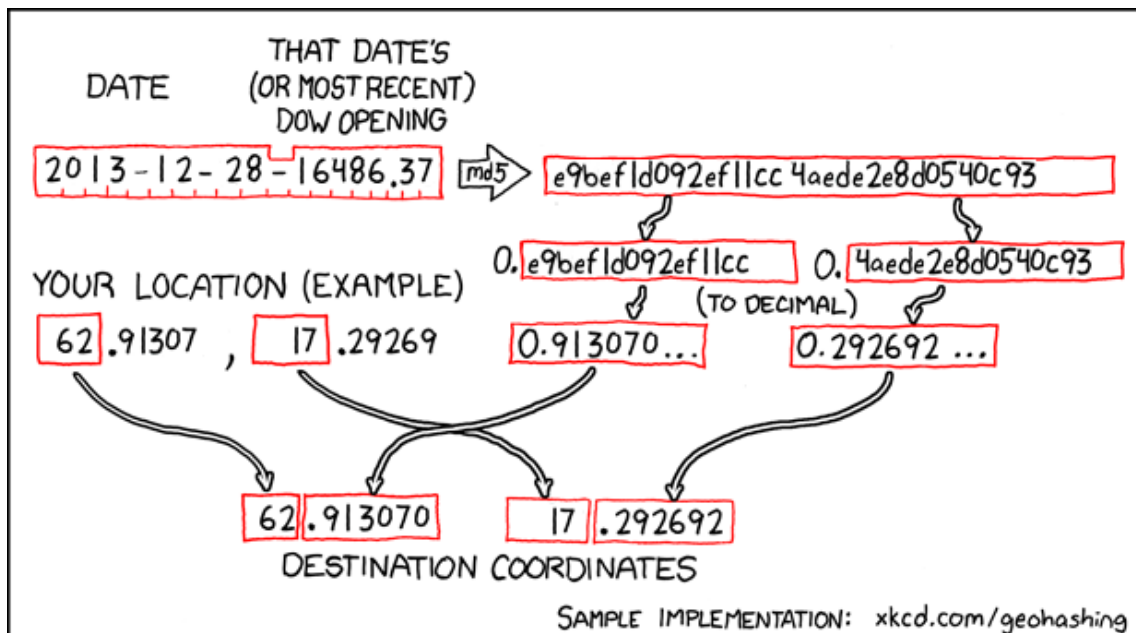
Geohash for 62, 17 on 2013-12-28

62.91307° N
17.292692° E

Grange District,
Västernorrlands län,
Sweden



How this geohash location was calculated



Geohashing is an adventure game, first described in xkcd comic #426. Every day, effectively random locations are generated by an algorithm and people try to get there. To find out more, or join in the fun yourself, visit <http://geohashing.org/>

The place to talk about this particular expedition is at http://geohashing.org/2013-12-28_62_17

