



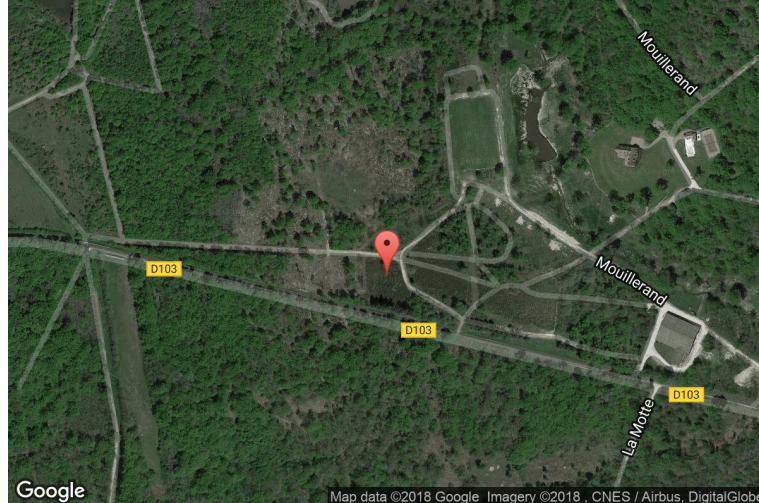
xkcd geohashing

The internet was here!

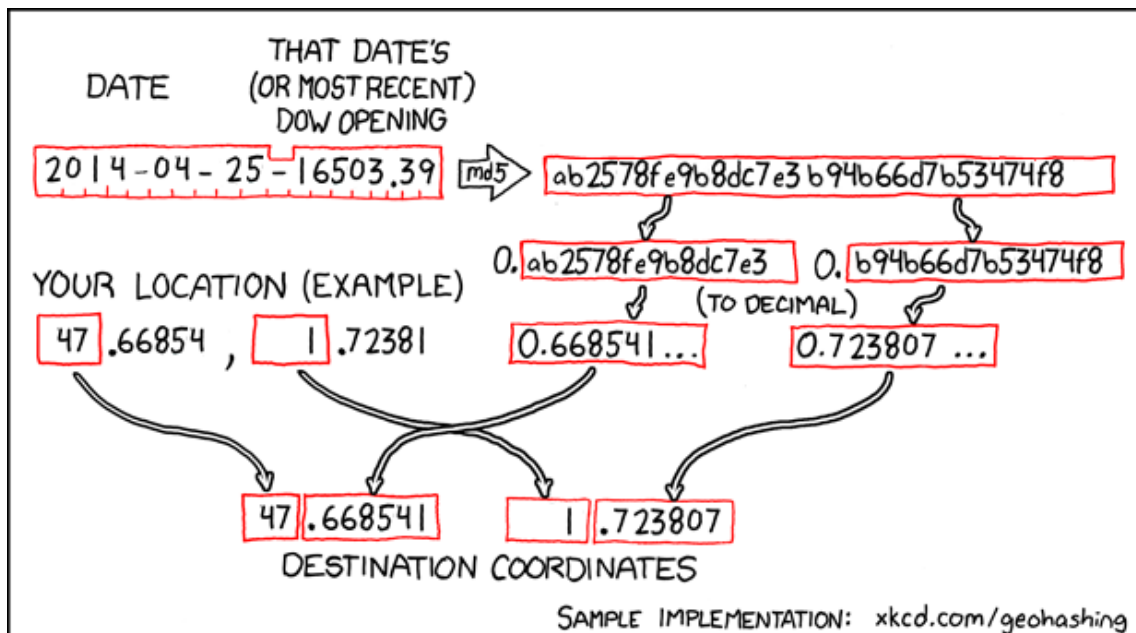
Geohash for 47, 1 on 2014-04-25

47.668541° N
1.723807° E

La Ferté-Saint-Cyr,
Centre-Val de Loire,
France



How this geohash location was calculated



Geohashing is an adventure game, first described in xkcd comic #426. Every day, effectively random locations are generated by an algorithm and people try to get there. To find out more, or join in the fun yourself, visit <http://geohashing.org/>

The place to talk about this particular expedition is at http://geohashing.org/2014-04-25_47_1

