



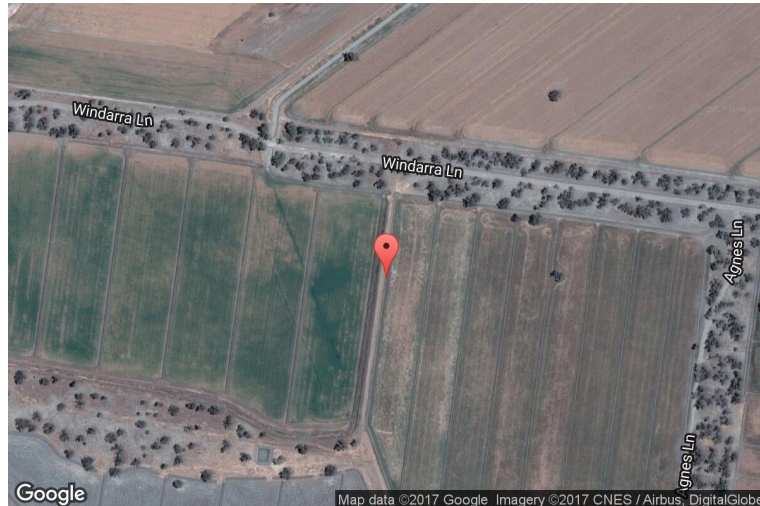
# xkcd geohashing

*The internet was here!*

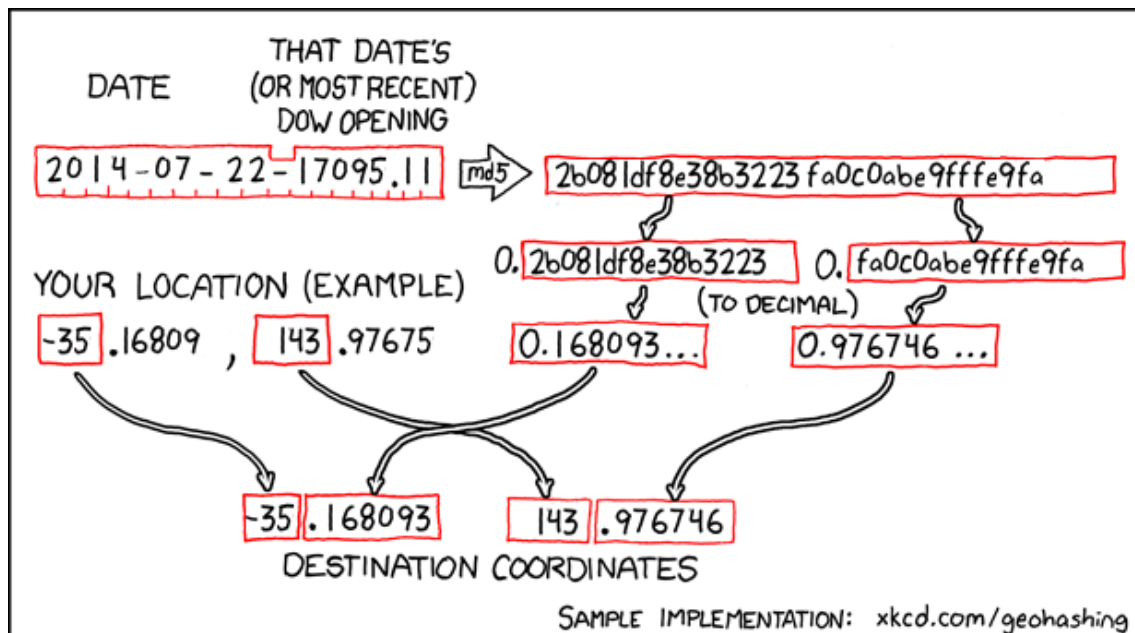
## Geohash for -35, 143 on 2014-07-22

35.168093° S  
143.976746° E

Moulamein, New  
South Wales,  
Australia



## How this geohash location was calculated



Geohashing is an adventure game, first described in xkcd comic #426. Every day, effectively random locations are generated by an algorithm and people try to get there. To find out more, or join in the fun yourself, visit <http://geohashing.org/>

The place to talk about this particular expedition is at [http://geohashing.org/2014-07-22\\_-35\\_143](http://geohashing.org/2014-07-22_-35_143)

